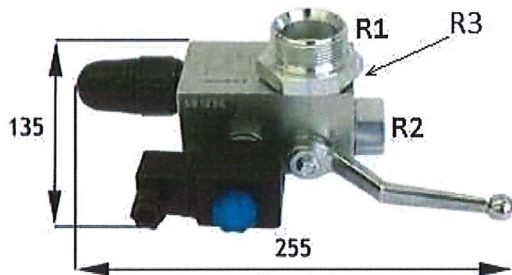
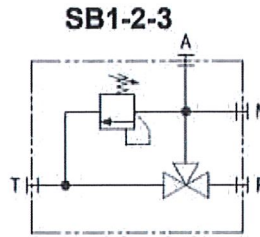
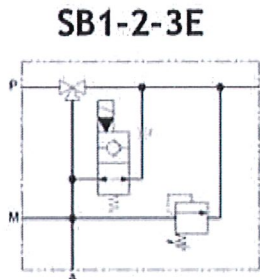


SB1-2-3



SB1-2-3E



Working temperature: From -20°C to +80°C

Electrovalve N.O., 24VDC Standard execution. Other execution on request

R1: Accumulator's side hydraulic connection

R2: Installation's side hydraulic connection

R3: 3/4" BSP thread of the block

SB1, SB1E, SB2, SB2E: Recommended accumulator size from 2,5L to 10L

SB3, SB3E: Recommended accumulator size from 10L to 50L

M: 1/4" BSP

Part nº	R1	R2	Details	Flow (l/min)	Max. Press. (bar)	Nitrogen vol. (l)
SB1	3/4" BSPM	1/2" BSPF	Manual	55L/min (10m/s)	350	2,5-10 L (recomend)
SB1E	3/4" BSPM	1/2" BSPF	Eléctrico / Electric	55L/min (10m/s)	350	2,5-10 L (recomend)
SB2	1" 1/4 BSPM	1/2" BSPF	Manual	55L/min (10m/s)	350	2,5-10 L (recomend)
SB2E	1" 1/4 BSPM	1/2" BSPF	Eléctrica / Electric	55L/min (10m/s)	350	2,5-10 L (recomend)
SB3	2" BSPM	1/2" BSPF	Manual	55L/min (10m/s)	350	10-50 L (recomend)
SB3E	2" BSPM	1/2" BSPF	Eléctrica / Electric	55L/min (10m/s)	350	10-50 L (recomend)