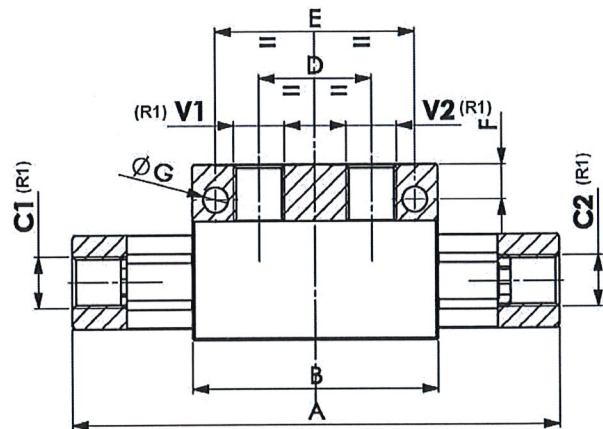
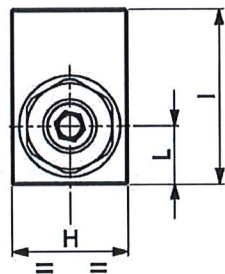
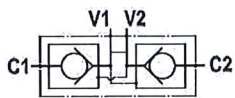
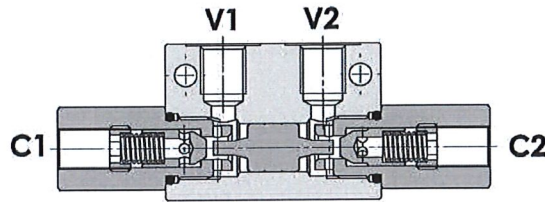


Hydraulic valves

Check valves

Double pilot operated check valve in block (in T)

Page: 1/1



Material Body in Steel

Cracking Pressure 2 bar

Part n°	R1	Max. flow (l/min)	Max. Press. (bar)	Pilot ratio	L	ØG	A	B	D	E	F	H	I
VT008004	1/4" BSP	12	350	1 : 4	15	6,5	126	63,6	29	51,6	9	30	45
VT008006	3/8" BSP	30	300	1 : 6	20	8	158	90	40	75	17	40	60
VT00800620	3/8" BSP	20	300	1 : 4	15	*	126	63,6	29	*	*	30	45
VT008008	1/2" BSP	45	300	1 : 6	20	8	174	90	40	75	17	40	60

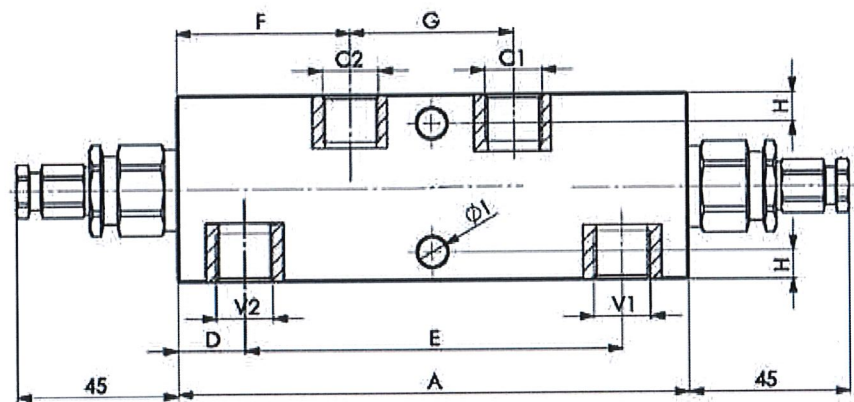
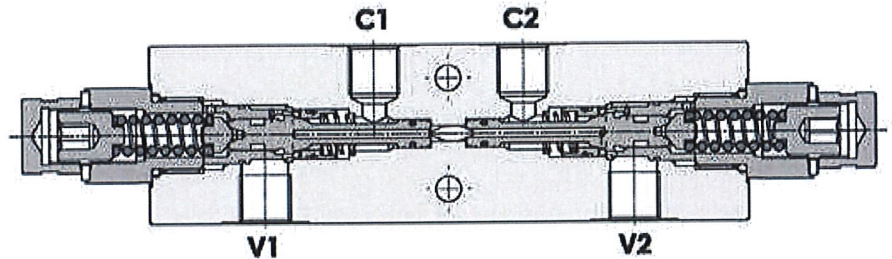
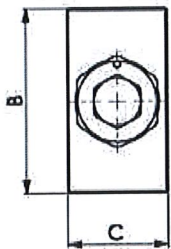
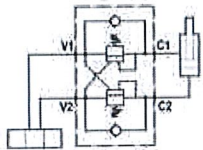
* Valve VT00800620 is supplied without fixing holes

Hydraulic valves

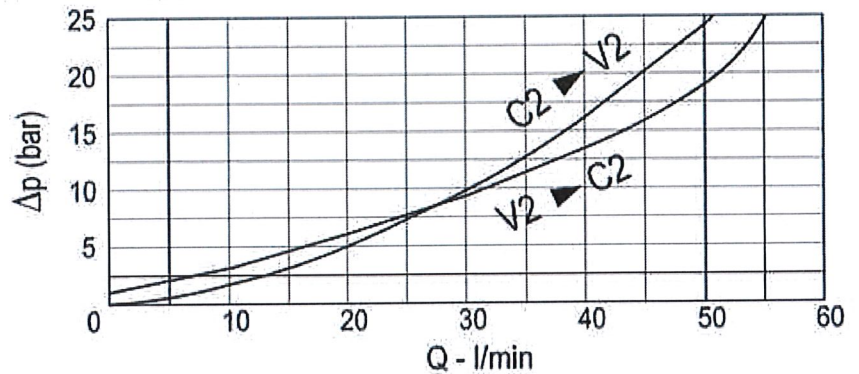
Overcenter valves

Double acting overcenter valve (in line)

Page: 1/1



Pressure drop curves Diagrama de pérdida de presión



R1=C1, C2, V1, V2

Pilot ratio: 1: 4,25 (1 : 8 and 1 : 11 on request)

Material: Body is steel made zinc plated.

Max. flow: 50 l/min.

Max.press: 350 bar

Adjustement means: Leakproof screw adjustement

Assembly: with control valve with this spool (*)

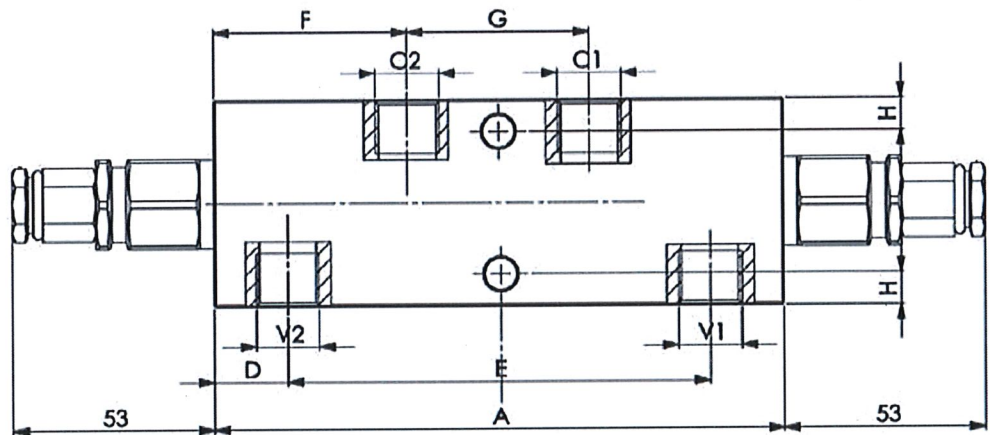
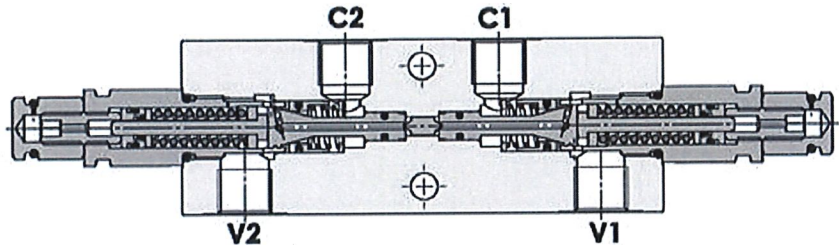
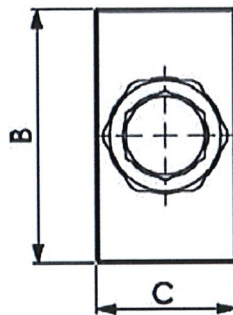
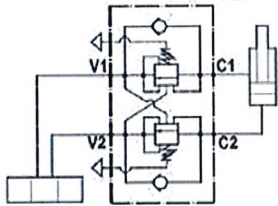
Part nº	R1	Max. flow (l/min)	Max. Press. (bar)	Setting (bar)	Reg. rate (bar)	Press. increase (bar/turn)	ØI	A	B	C	D	E	F	G	H
VT0120063535	3/8" BSP	50	350	280	80 - 350	120	8,5	150	55	30	19	112	51	48	8,5
VT0120085035	1/2" BSP	50	350	280	80 - 350	120	8,5	150	65	35	19	112	51	48	11

Hydraulic valves

Overcenter valves

Double acting balanced overcenter valve (line)

Page: 1/1



R1=C1, C2, V1, V2

Pilot ratio: 1:4,25 (1 : 8 and 1 : 11 on request)

Material: Body is steel made zinc plated.

Max.flow: 50 l/min

Max.press: 350 bar

Adjustment means: Leakproof screw

Assembly: with control valve with any spool

Part n°	R1	Max. flow (l/min)	Max. Press. (bar)	Setting (bar)	Reg. rate (bar)	Press. increase (bar/turn)	A	B	C	D	E	F	G	H	I
VT0160063520	3/8" BSP	50	350	170	60 - 210	70	150	55	30	19	112	51	48	8,5	8,5
VT0160063535	3/8" BSP	50	350	280	80 - 350	120	150	55	30	19	112	51	48	8,5	8,5
VT0160085020	1/2" BSP	50	350	280	60 - 210	70	150	65	35	19	112	51	48	11	8,5
VT0160065035	1/2" BSP	50	350	170	80 - 350	120	150	65	35	19	112	51	48	11	8,5

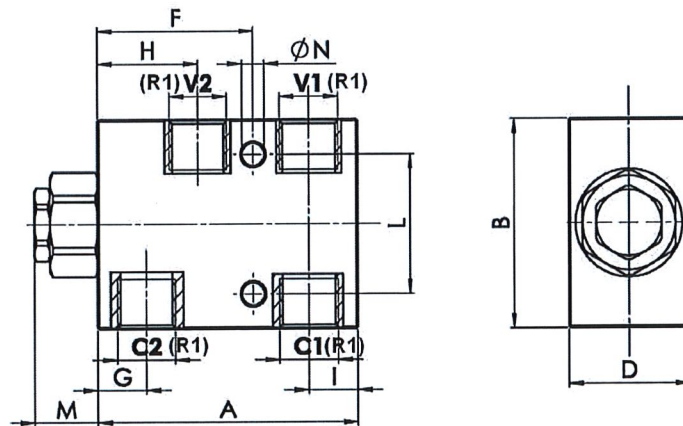
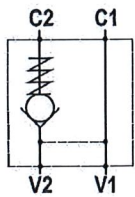
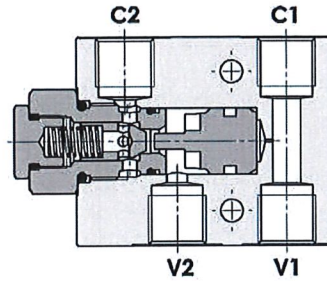
*** Review attached PDF***

Hydraulic valves

Check valves

Single pilot operated check valve in block

Page: 1/1



Material Body in Aluminium

Cracking Pressure 2,5 bar (5bar and 10bar on request)

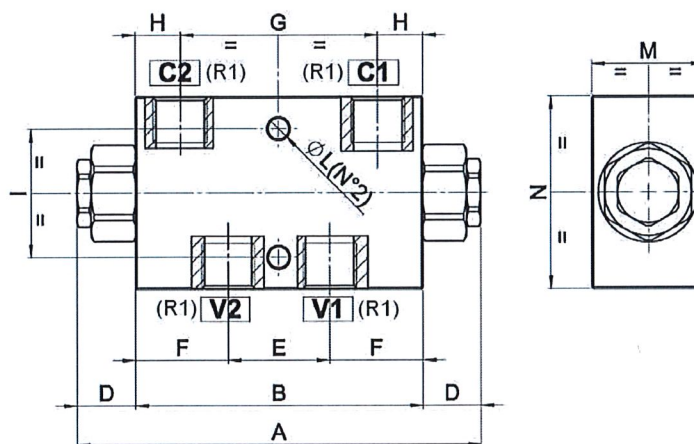
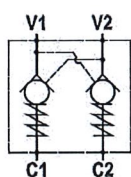
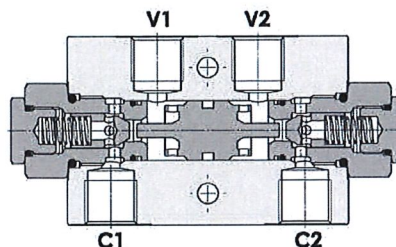
Part n°	R1	Max. flow (l/min)	Max. Press. (bar)	Pilot ratio	L	ØN	A	B	D	F	G	H	I	M
VT004006	3/8" BSP	30	250	1 : 7	40	6,5	75	60	35	45	14	29	14	18,5
VT004008	1/2" BSP	45	250	1 : 3.5	40	8,5	95	70	35	55	21	38	19	15

Hydraulic valves

Check valves

Double pilot operated check valve

Page: 1/1



Material Body in Aluminium

Cracking Pressure 2,5 bar (5 bar and 10 bar on request)

Part n°	R1	Max. flow (l/min)	Max. Press. (bar)	Pilot ratio	ØN	A	B	D	E	F	G	H	I	M	N
VT003006	3/8" BSP	30	250	1 : 7	6,5	127	90	18,5	32	29	62	14	40	35	60
VT003008	1/2" BSP	45	250	1 : 3.5	8,5	138	110	14,5	34	38	68	21	40	35	70