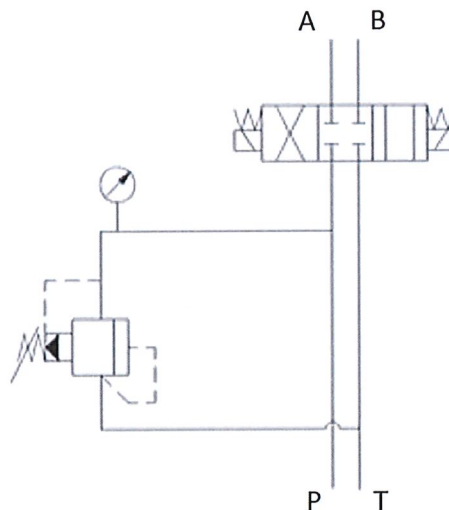


Solenoid valves

Subplates for NG6

Subplate for NG6 directional valves, one element, with relief valve, A & B side ports

Page: 1/1



Part nº	R1	Nº directional valves
PF1CL180 H	3/8" BSP	1

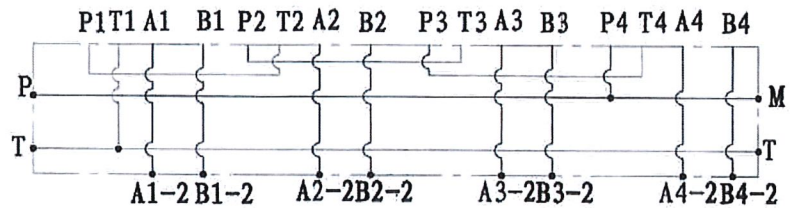
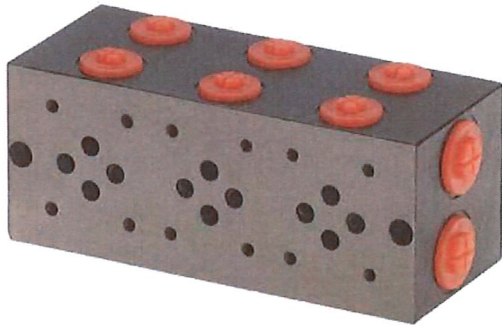
*** Review attached PDF***
 Maximum flow: 40 L/min
 Regulation rate: 20-250 bar
 It includes pressure gauge intake

Solenoid valves

Subplates for NG6

Series subplate for NG6 directional valve without relief valve, A & B side ports

Page: 1/1



Part n°	R1	N° directional valves
PF2SL H	3/8" BSP	2
PF3SL H	3/8" BSP	3
PF4SL H	3/8" BSP	4

*** Review attached PDF***

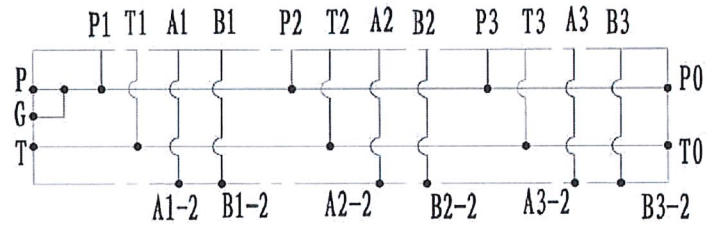
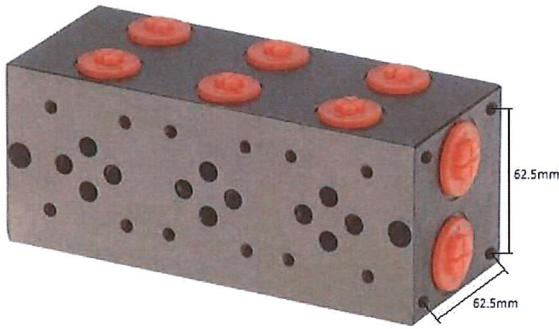
Maximum flow: 40 L/min

Solenoid valves

Subplates for NG6

Parallel subplate for NG6 directional valve without relief valve, A & B side ports

Page: 1/1



Forged steel

Part n°	R1	N° directional valves
PF2PL H	3/8" BSP	2
PF3PL H	3/8" BSP	3
PF4PL H	3/8" BSP	4
PF5PL H	3/8" BSP	5
PF6PL H	3/8" BSP	6
PF7PL H	3/8" BSP	7
PF8PL H	3/8" BSP	8
PF9PL H	3/8" BSP	9
PF10PL H	3/8" BSP	10

*** Review attached PDF***

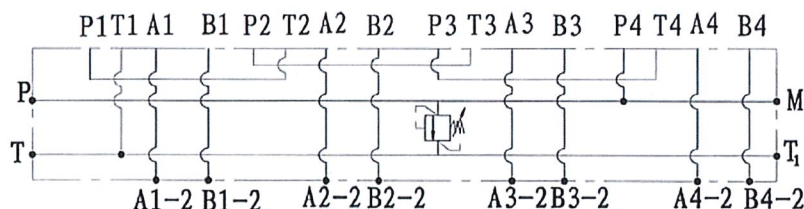
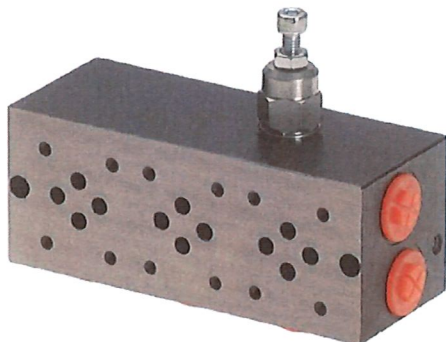
Maximum flow: 40 L/min

Solenoid valves

Subplates for NG6

Series subplate for NG6 directional valve with relief valve, A & B side ports

Page: 1/1



Part n°	R1	N° directional valves
PF2SLCL180 H	3/8" BSP	2
PF3SLCL180 H	3/8" BSP	3
PF4SLCL180 H	3/8" BSP	4

*** Review attached PDF***

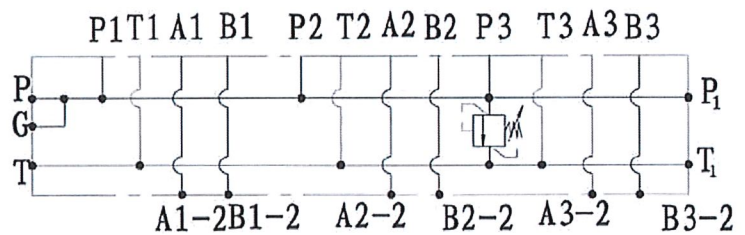
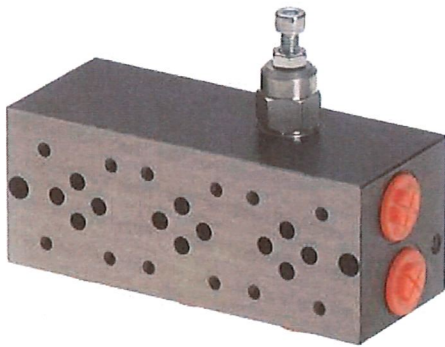
Maximum flow: 40 L/min
Regulation rate: 20-250 bar

Solenoid valves

Subplates for NG6

Parallel subplate for NG6 directional valve with relief valve, A & B side ports

Page: 1/1



Part n°	R1	N° directional valves
PF2PLCL180 H	3/8" BSP	2
PF3PLCL180 H	3/8" BSP	3
PF4PLCL180 H	3/8" BSP	4
PF5PLCL180 H	3/8" BSP	5
PF6PLCL180 H	3/8" BSP	6
PF7PLCL180 H	3/8" BSP	7
PF8PLCL180 H	3/8" BSP	8
PF9PLCL180 H	3/8" BSP	9
PF10PLCL180 H	3/8" BSP	10

*** Review attached PDF***

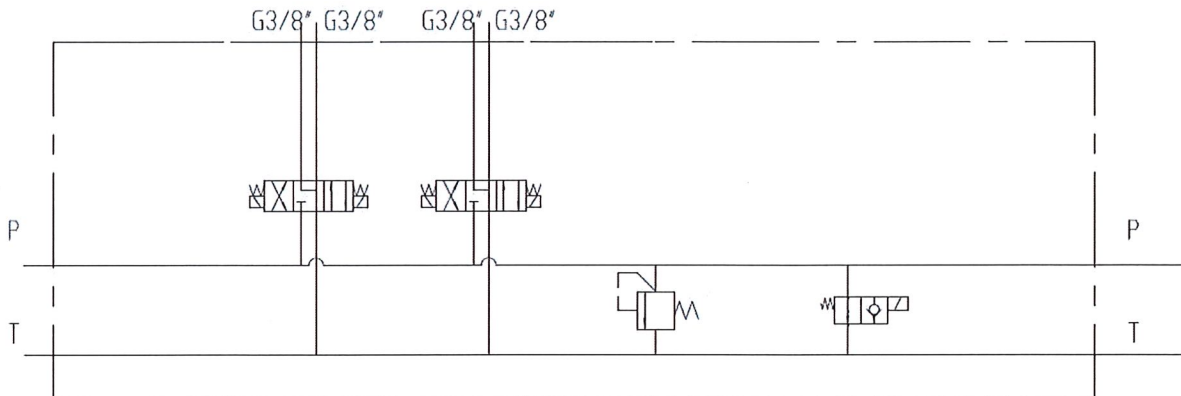
Maximum flow: 40 L/min
Regulation rate: 20-250 bar

Solenoid valves

Subplates for NG6

Parallel subplate for NG6 direct.valve with relief valve,by pass cavity,ins.valves,A & B side ports

Page: 1/1



Electric valve: VENA08F + BOF38 (depending of voltage)
Relief valve range: Up to 25MPa

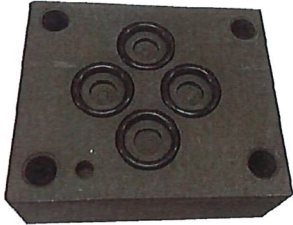
Part n°	R1	N° directional valves
PV2PLCL180 H	3/8" BSP	2
PV3PLCL180 H	3/8" BSP	3
PV4PLCL180 H	3/8" BSP	4
PV5PLCL180 H	3/8" BSP	5
PV6PLCL180 H	3/8" BSP	6
PV7PLCL180 H	3/8" BSP	7
PV8PLCL180 H	3/8" BSP	8
PV9PLCL180 H	3/8" BSP	9
PV10PLCL180 H	3/8" BSP	10

*** Review attached PDF***

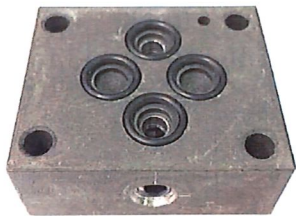
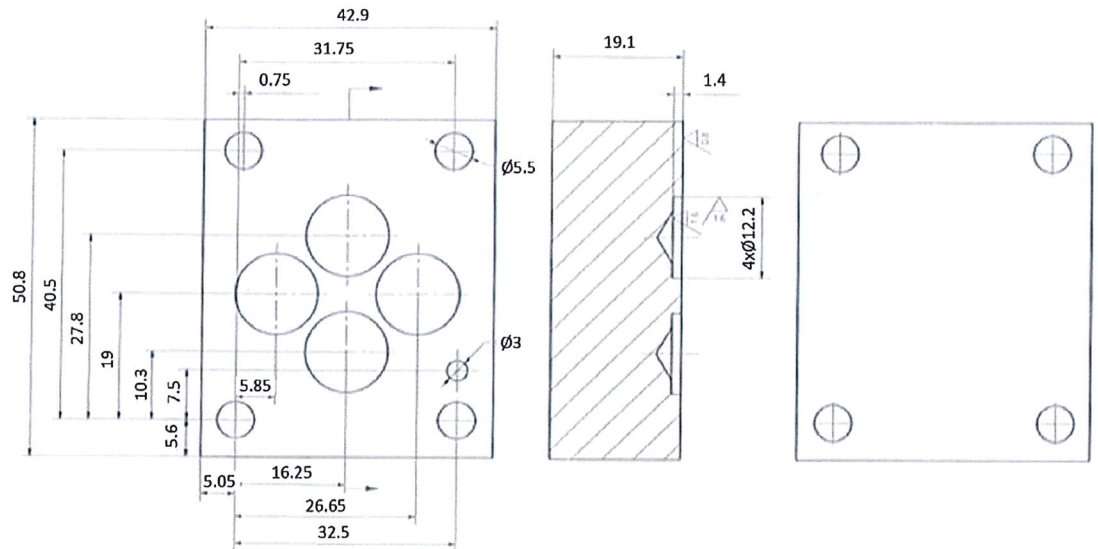
Solenoid valves

Subplates for NG6

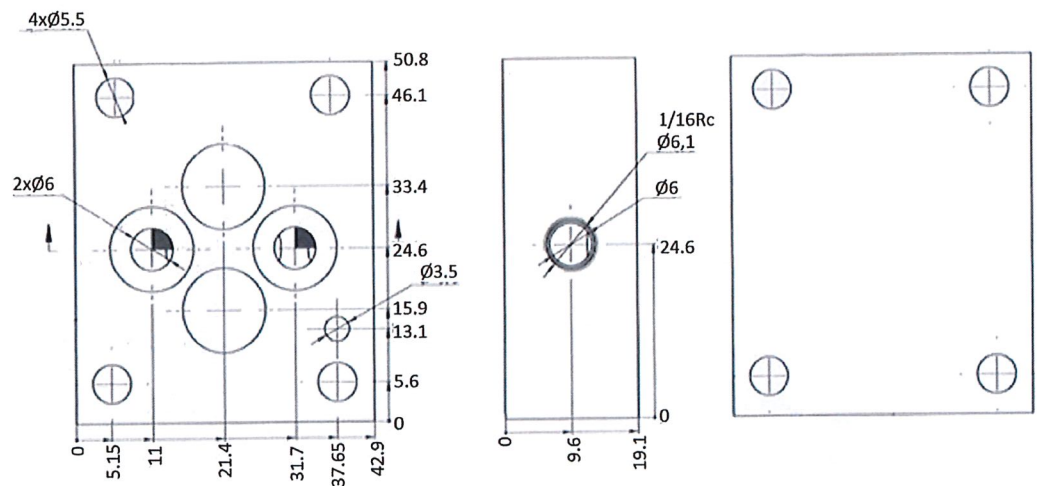
Cover plate for NG6



PBCNG06P H



PBCNG06S H:



Forged steel

Solenoid valves

Subplates for NG6

Cover plate for NG6

Page: 2/2

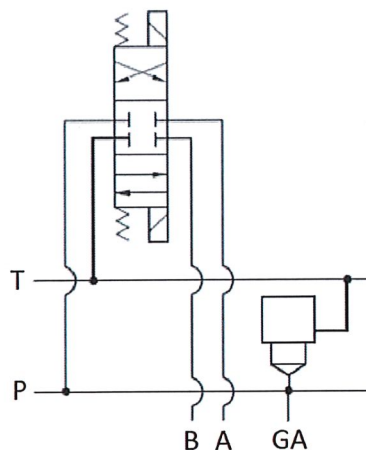
Part n°	Details
PBCNG06S H	Series
PBCNG06P H	Parallel

Solenoid valves

Subplates for NG10

**Subplate for NG10 directional valves, one element,
with relief valve, A & B side ports**

Page: 1/1



Part n°	R1	Size	Max. flow (l/min)	Max. Press. (bar)	Reg. rate (bar)	N° directional valves
PF1NG10CL180 H	1/2" BSP	NG-10	80	315	20-250	1

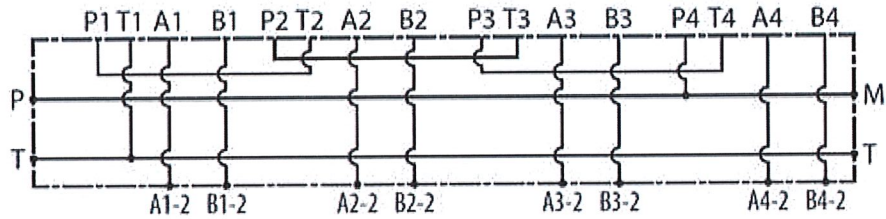
*** Review attached PDF***

Solenoid valves

Subplates for NG10

Series subplate for NG 10 directional valve without relief valve, A & B side ports

Page: 1/1



Part n°	Size	N° directional valves
PFNG102SL H	NG-10	2
PFNG103SL H	NG-10	3
PFNG104SL H	NG-10	4

*** Review attached PDF***

Maximum flow: 60 L/min

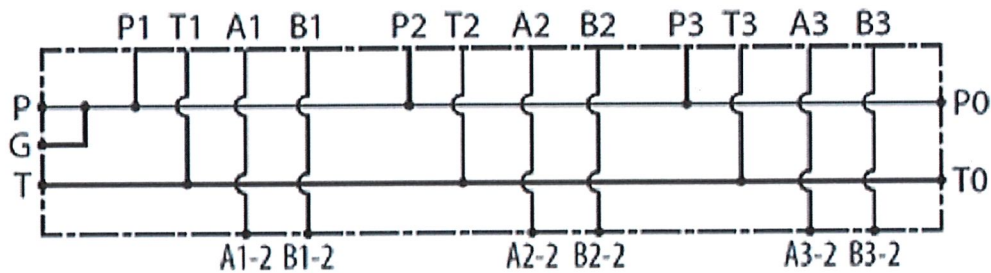
Legs included

Solenoid valves

Subplates for NG10

Parallel subplate for NG10 directional valve without relief valve, A & B side ports

Page: 1/1



Forged steel

Part n°	Size	N° directional valves
PFNG102PL H	NG-10	2
PFNG103PL H	NG-10	3
PFNG104PL H	NG-10	4
PFNG105PL H	NG-10	5

*** Review attached PDF***

Maximum flow: 120 L/min

Legs included

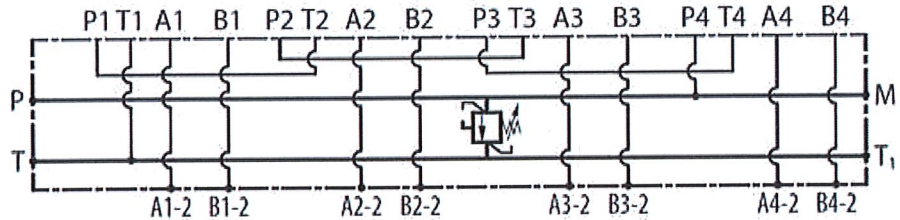
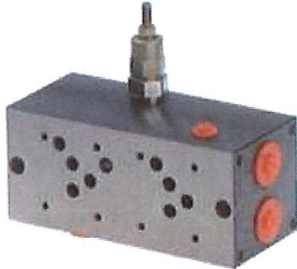
Max pressure: 315 bar

Solenoid valves

Subplates for NG10

Series subplate for NG10 directional valve with relief valve, A & B side ports

Page: 1/1



Part n°	Size	N° directional valves
PFNG102SLCL180 H	NG-10	2
PFNG103SLCL180 H	NG-10	3
PFNG104SLCL180 H	NG-10	4

*** Review attached PDF***

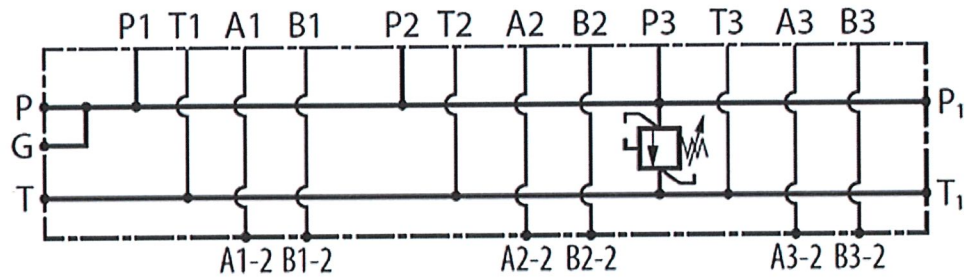
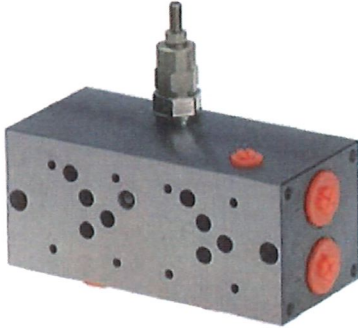
Maximum flow: 90 L/min
 Regulation rate: 20-250 bar
 Legs included

Solenoid valves

Subplates for NG10

Parallel subplate for NG10 directional valves with relief valve, A & B side ports

Page: 1/1



Part n°	Size	N° directional valves
PFNG102PLCL180 H	NG-10	2
PFNG103PLCL180 H	NG-10	3
PFNG104PLCL180 H	NG-10	4
PFNG105PLCL180 H	NG-10	5

*** Review attached PDF***

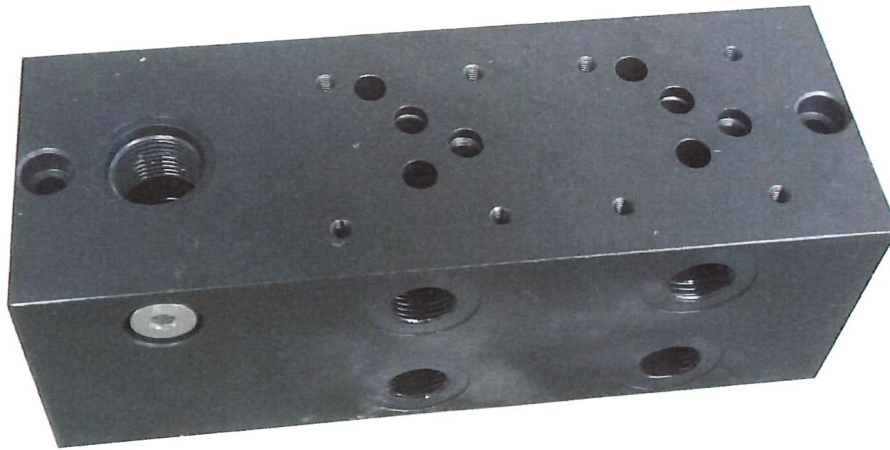
Maximum flow: 120 l/min
 Regulation rate: 20-250 bar
 Legs included
 Max pressure: 315 bar

Solenoid valves

Subplates for NG10

Parallel subplate for NG10 direct.valve w/ relief valve, venting cavity, ins.dir.valv,A-B side ports

Page: 1/1



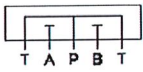
Part n°	R1	N° directional valves
PVNG102PLCL180 H	1/2" BSP	2
PVNG103PLCL180 H	1/2" BSP	3
PVNG104PLCL180 H	1/2" BSP	4
PVNG105PLCL180 H	1/2" BSP	5

*** Review attached PDF***

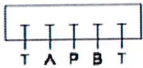
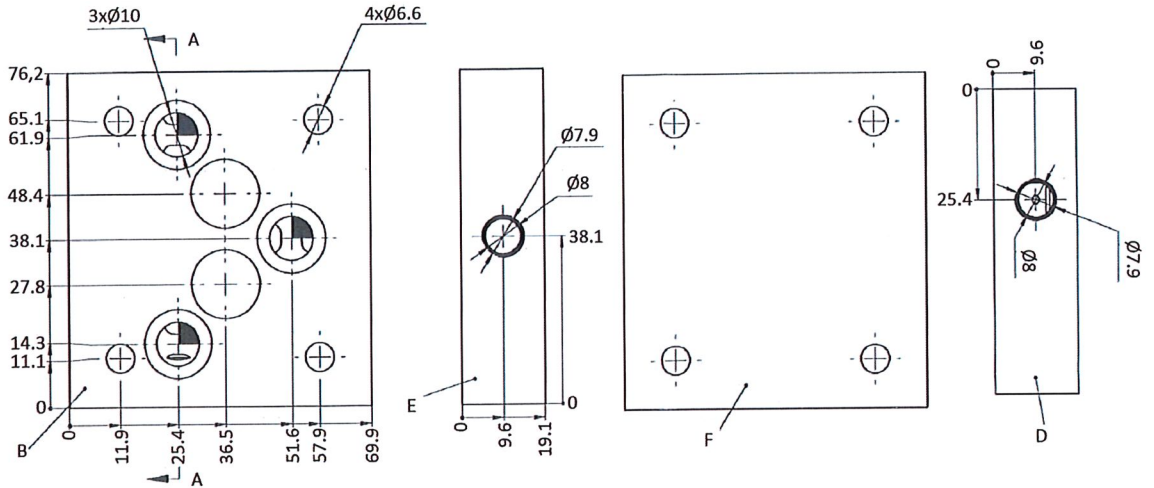
Solenoid valves

Subplates for NG10

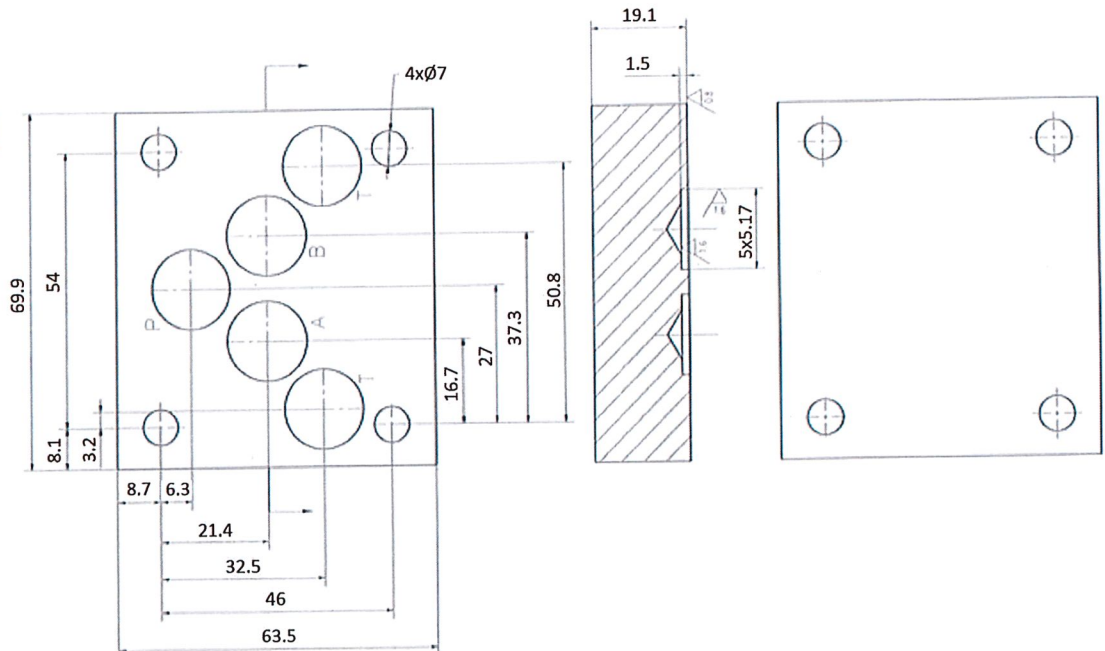
Cover plate for NG10



PBCNG10S H :



PBCNG10P H :



Forged steel

Solenoid valves

Subplates for NG10

Cover plate for NG10

Page: 2/2

Part n°	Details
PBCNG10S H	Series
PBCNG10P H	Parallel