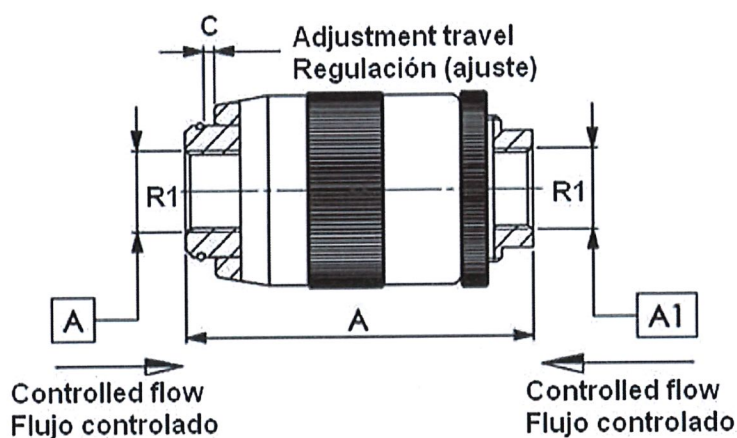
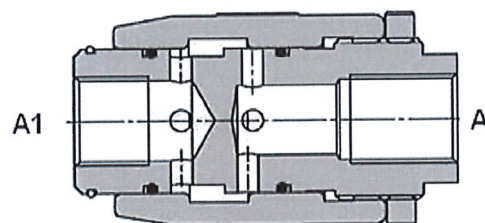
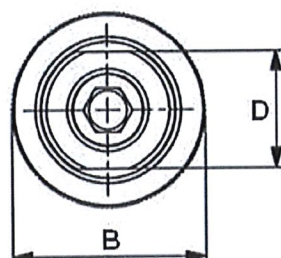


Hydraulic valves

Restrictor valves and hose breaks valves

Barrel flow control valve - bidirectionnel

Page: 1/1



Materials: -body and internal parts are steel made.
-external surface zinc plated.

Rated flow: up to 150 l/min

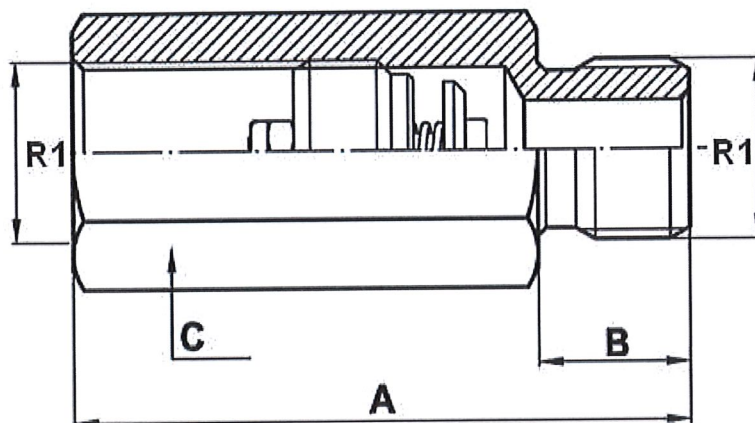
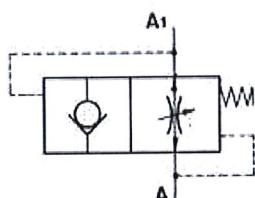
Part nº	R1	Max. flow (l/min)	Max. Press. (bar)	A	B	C	D
VT010004	1/4" BSP	12	350	62	34	4,5	19
VT010006	3/8" BSP	30	350	72	40	5,5	24
VT010008	1/2" BSP	45	310	80	46	7	30

Hydraulic valves

Restrictor valves and hose breaks valves

Hose break valve male-female

Page: 1/1



Materials: All components are steel made.

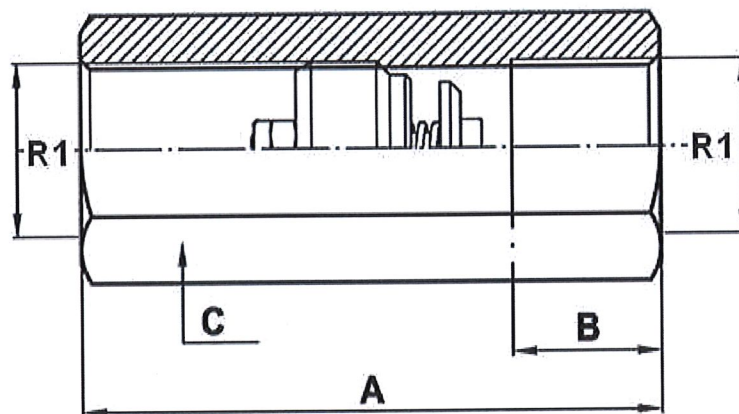
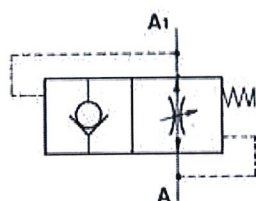
Part n°	R1	Max. flow (l/min)	Max. Press. (bar)	A	B	C
VT007004	1/4" BSP	25	350	50	12	19
VT007006	3/8" BSP	50	350	58	12	22
VT007008	1/2" BSP	80	350	70	14	27

Hydraulic valves

Restrictor valves and hose breaks valves

Hose break valve female-female

Page: 1/1



Materials: All components are steel made.

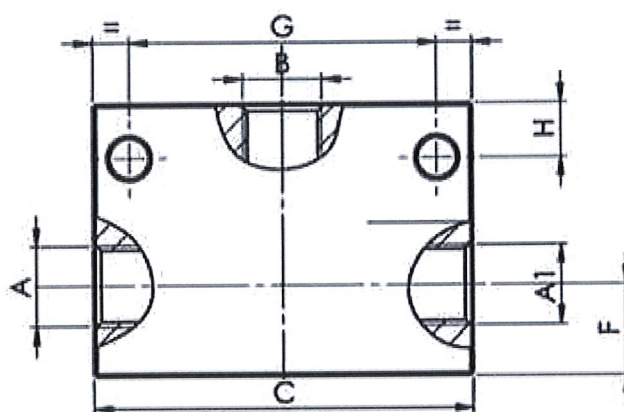
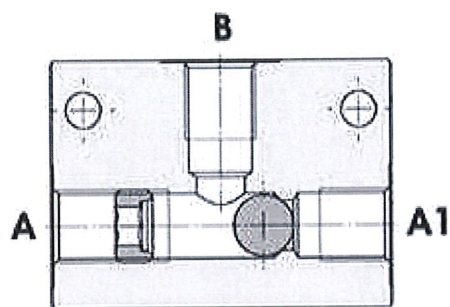
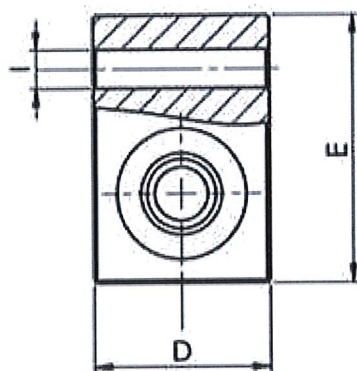
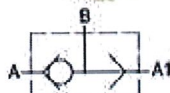
Part n°	R1	Max. flow (l/min)	Max. Press. (bar)	A	B	C
VT006004	1/4" BSP	25	350	48	12	19
VT006006	3/8" BSP	50	350	60	14	22
VT006008	1/2" BSP	80	350	62	14	27

Hydraulic valves

Restrictor valves and hose breaks valves

Shuttle valve

Page: 1/1

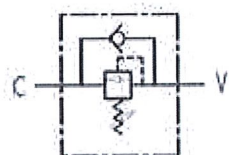


Materials: -body and internal parts are steel made.
-external surface zinc plated.

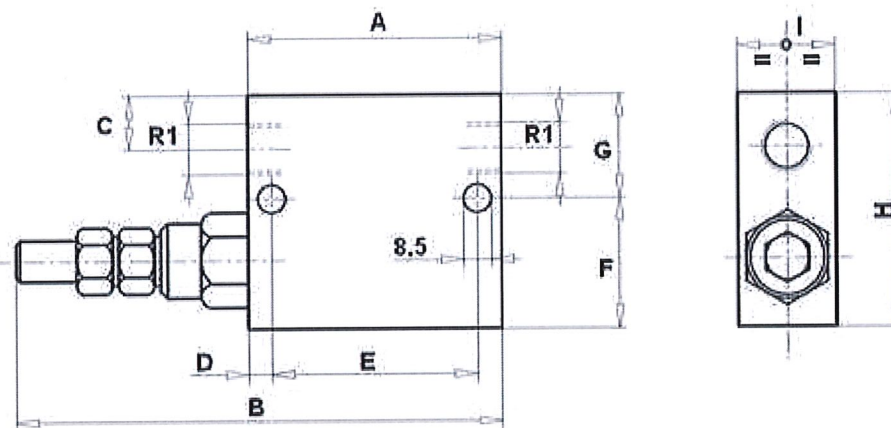
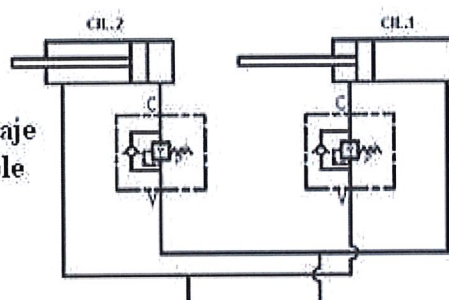
R1: A, A1, B

Part nº	R1	Max. flow (l/min)	Max. Press. (bar)	C	D	E	F	G	H	I
VT005004	1/4" BSP	25	350	63	30	45	15	51	9	6,5
VT005006	3/8" BSP	50	350	63	30	45	15	51	9	6,5

Sequence valve with check valve (steel)

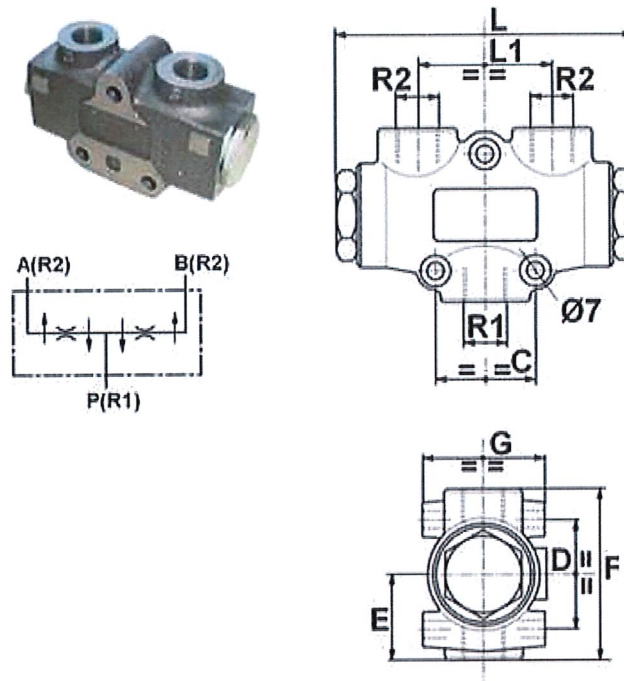


Ejemplo de montaje
Mounting example



Material: Body in zinc-plated steel
Max.flow: 70 l/min
Max.press: 350 bar
R1 = C,V

Part nº	R1	Max. flow (l/min)	Max. Press. (bar)	Setting (bar)	Reg. rate (bar)	Press. increase (bar/turn)	A	B	C	D	E	F	G	H	I
VS2C3/8	3/8" BSP	35	350	90.0000	10 - 180	30	74	146	14	7	55	39	31	70	30
VS2C3/8 50-250	3/8" BSP	35	350	130.0000	50 - 250	45	74	146	14	7	55	39	31	70	30
VS2C1/2	1/2" BSP	70	350	90.0000	10 - 180	30	80	152	15	7	55	37	33	70	30
vs2c1/2 20-100	1/2" BSP	70	350	75.0000	20 - 100	12	80	152	15	7	55	37	33	70	30
VS2C1/2 50-250	1/2" BSP	70	350	130.0000	50 - 250	45	80	152	15	7	55	37	33	70	30

**Peak pressure:** 300 bar**Material:** Steel

Part n°	R1	R2	Min. flow (l/min)	Max. flow (l/min)	L	L1	C	D	E	F	G
VDP 02-10	3/8" BSP	3/8" BSP	3	6	117	53	40	45	35	68	48
VDP 02-15	3/8" BSP	3/8" BSP	6	10	117	53	40	45	35	68	48
VDP 02-20	3/8" BSP	3/8" BSP	10	20	117	53	40	45	35	68	48
VDP 02-22	3/8" BSP	3/8" BSP	20	32	117	53	40	45	35	68	48
VDP 02-25	1/2" BSP	3/8" BSP	25	40	117	53	40	45	35	68	48
VDP 02-30	1/2" BSP	3/8" BSP	40	60	117	53	40	45	35	68	48
VDP 02-50	1/2" BSP	3/8" BSP	60	80	117	53	40	45	35	68	48