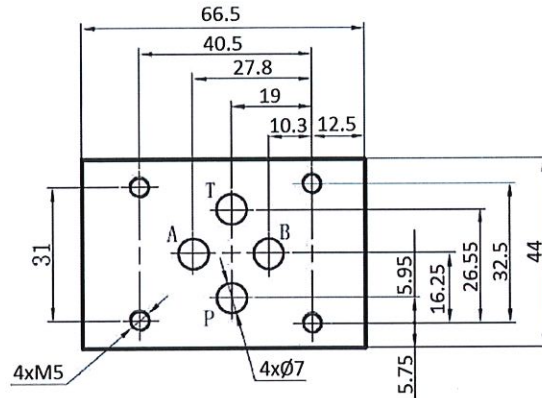
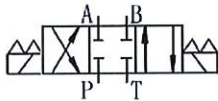
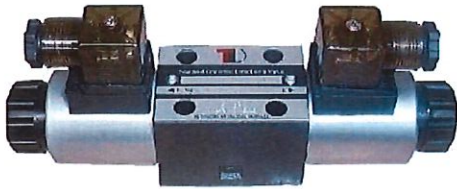


Solenoid valves

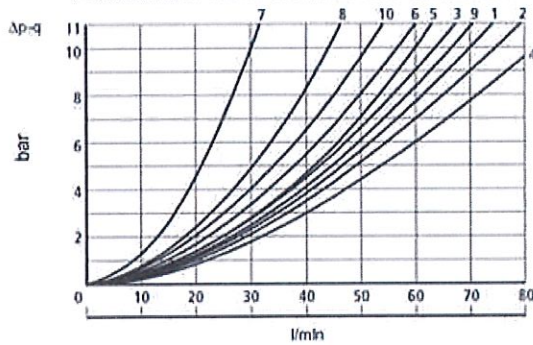
NG6 Solenoid valve

NG6 Solenoid valve - spool no.1

Page: 1/2



Performance curves/Curvas de rendimiento



Spool / Corredera	Flow path/Trayectoria flujo			
	P-A	P-B	A-T	B-T
1	3	3	1	1
2	6	6	9	9
3	2	4	2	2
6	1	1	2	1
3A	-	4	2	-
41A	3	3	-	-
51A	1	1	3	1

- Electric Connectors** with LED
- 4 Screw Set Included** M5x45
- Operating Pressure**
 - A, B, P: 315 bar
 - T: 160 bar
- Cast iron body** IP 65

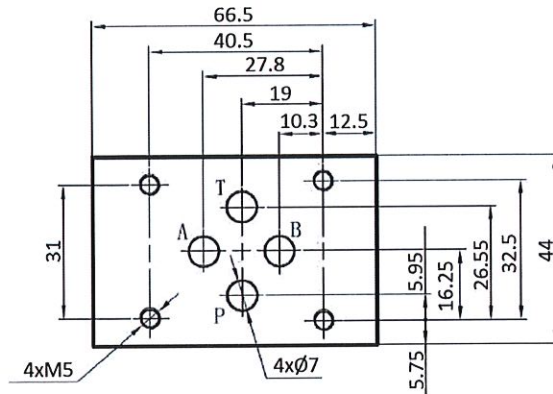
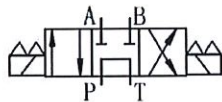
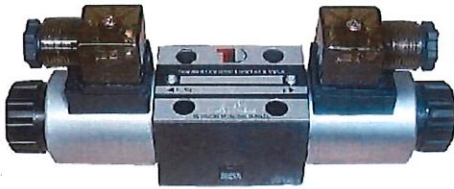
Part nº	Size	Voltage (V)	Max. flow (l/min)	Max. Press. (bar)	f (Hz)
KVNG6-1-12CC H	NG-6	12 VDC	60	315	
KVNG6-1-24CC H	NG-6	24 VDC	60	315	
KVNG6-1-110CA H	NG-6	110 VAC	60	315	50
KVNG6-1-220CA H	NG-6	220 VAC	60	315	50

Solenoid valves

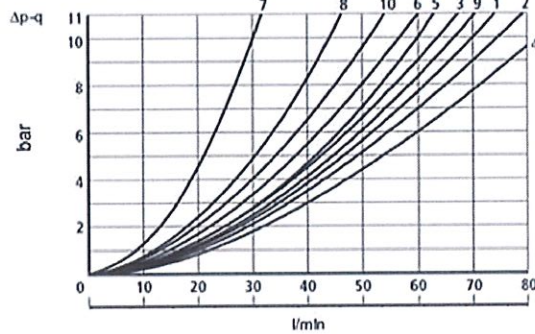
NG6 Solenoid valve

NG6 Solenoid valve - spool no.2

Page: 1/2



Performance curves/Curvas de rendimiento



Spool / Corredera	Flow path/Trayectoria flujo			
	P-A	P-B	A-T	B-T
1	3	3	1	1
2	6	6	9	9
3	2	4	2	2
6	1	1	2	1
3A	-	4	2	-
41A	3	3	-	-
51A	1	1	3	1

Electric Connectors with LED

4 Screw Set Included M5x45

Operating Pressure · A, B, P: 315 bar
· T: 160 bar

Cast iron body IP 65

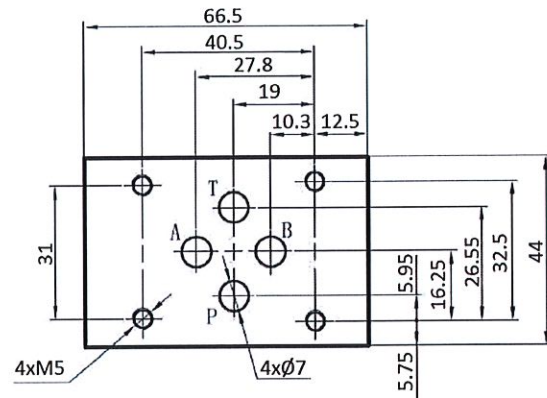
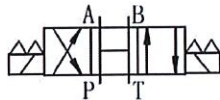
Part n°	Size	Voltage (V)	Max. flow (l/min)	Max. Press. (bar)	f (Hz)
KVNG6-2-12CC H	NG-6	12 VDC	60	315	
KVNG6-2-24CC H	NG-6	24 VDC	60	315	
KVNG6-2-110CA H	NG-6	110 VAC	60	315	50
KVNG6-2-220CA H	NG-6	220 VAC	60	315	50

Solenoid valves

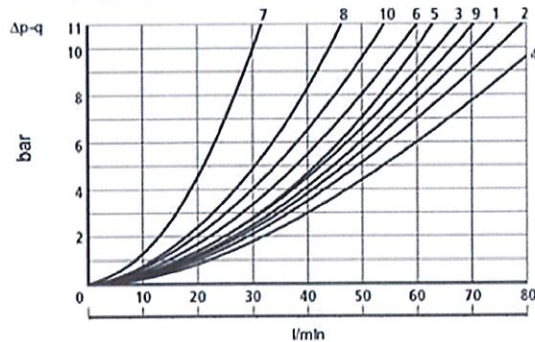
NG6 Solenoid valve

NG6 Solenoid valve - spool no.3

Page: 1/2



Performance curves/Curvas de rendimiento



Spool / Corredera	Flow path / Trayectoria flujo			
	P-A	P-B	A-T	B-T
1	3	3	1	1
2	6	6	9	9
3	2	4	2	2
6	1	1	2	1
3A	-	4	2	-
41A	3	3	-	-
51A	1	1	3	1

- Electric Connectors** with LED
- Max. Flow Rate** 60 l/min
- Operating Pressure**
 - A, B, P: 315 bar
 - T: 160 bar
- Cast iron body** IP 65

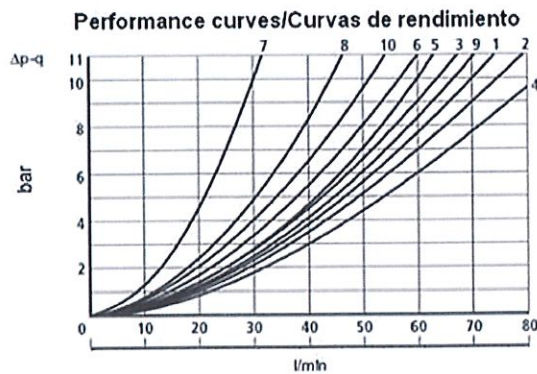
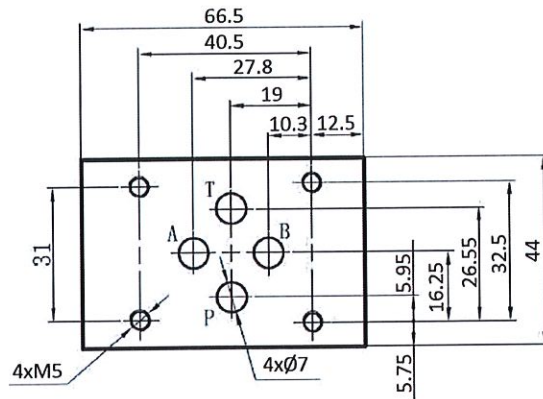
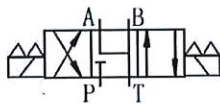
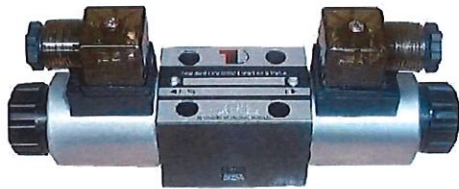
Part nº	Size	Voltage (V)	Max. flow (l/min)	Max. Press. (bar)	f (Hz)
KVNG6-3-12CC H	NG-6	12 VDC	60	315	
KVNG6-3-24CC H	NG-6	24 VDC	60	315	
KVNG6-3-110CA H	NG-6	110 VAC	60	315	50
KVNG6-3-220CA H	NG-6	220 VAC	60	315	50

Solenoid valves

NG6 Solenoid valve

NG6 Solenoid valve - spool no.6

Page: 1/2



Spool / Corredera	Flow path/Trayectoria flujo			
	P-A	P-B	A-T	B-T
1	3	3	1	1
2	6	6	9	9
3	2	4	2	2
6	1	1	2	1
3A	-	4	2	-
41A	3	3	-	-
51A	1	1	3	1

- Electric Connectors** with LED
- 4 Screw Set Included** M5x45
- Operating Pressure**
 - A, B, P: 315 bar
 - T: 160 bar
- Cast iron body** IP 65

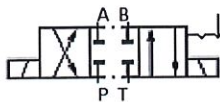
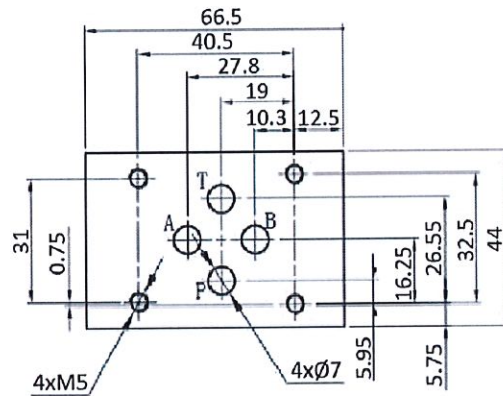
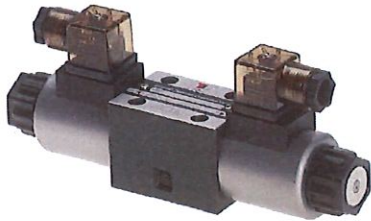
Part nº	Size	Voltage (V)	Max. flow (l/min)	Max. Press. (bar)	f (Hz)
KVNG6-6-12CC H	NG-6	12 VDC	60	315	
KVNG6-6-24CC H	NG-6	24 VDC	60	315	
KVNG6-6-110CA H	NG-6	110 VAC	60	315	50
KVNG6-6-220CA H	NG-6	220 VAC	60	315	50

Solenoid valves

NG6 Solenoid valve

NG6 Solenoid valve - spool RK

Page: 1/1



Electric Connectors with LED

4 Screw Set Included M5x45

Operating Pressure · A, B, P: 315 bar
· T: 160 bar

Cast iron body IP 65

Part n°	Size	Voltage (V)	Max. flow (l/min)	Max. Press. (bar)	f (Hz)
KVNG6-RK-12CC H	NG-6	12 VDC	60	315	
KVNG6-RK-24CC H	NG-6	24 VDC	60	315	
KVNG6-RK-220CA H	NG-6	220 VAC	60	315	50

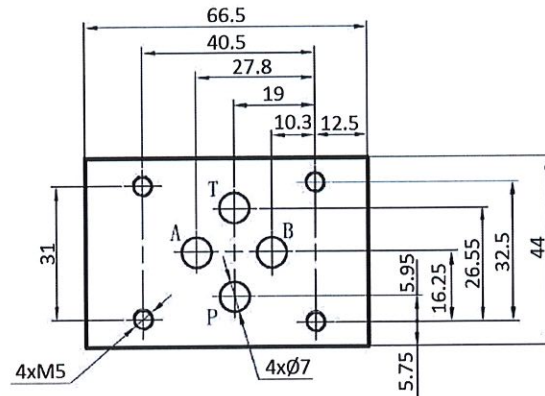
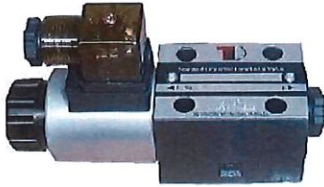
*** Review attached PDF***

Solenoid valves

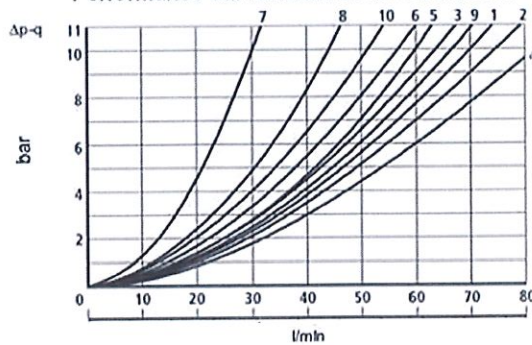
NG6 Solenoid valve

NG6 Solenoid valve - spool no.3A

Page: 1/2



Performance curves/Curvas de rendimiento



Spool / Corredera	Flow path / Trayectoria flujo			
	P-A	P-B	A-T	B-T
1	3	3	1	1
2	6	6	9	9
3	2	4	2	2
6	1	1	2	1
3A	-	6	2	-
41A	3	3	-	-
51A	1	1	3	1

Electric Connectors with LED

4 Screw Set Included M5x45

Operating Pressure
 · A, B, P: 315 bar
 · T: 160 bar

Cast iron body IP 65

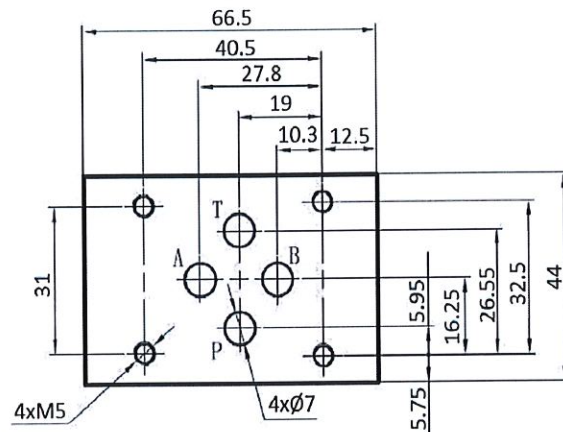
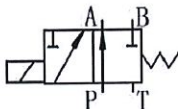
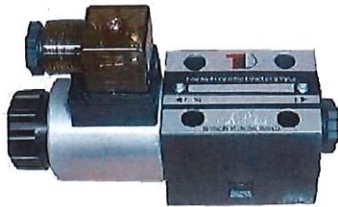
Part nº	Size	Voltage (V)	Max. flow (l/min)	Max. Press. (bar)	f (Hz)
KVNG6-3A-12CC H	NG-6	12 VDC	60	315	
KVNG6-3A-24CC H	NG-6	24 VDC	60	315	
KVNG6-3A-110CA H	NG-6	110 VAC	60	315	50
KVNG6-3A-220CA H	NG-6	220 VAC	60	315	50

Solenoid valves

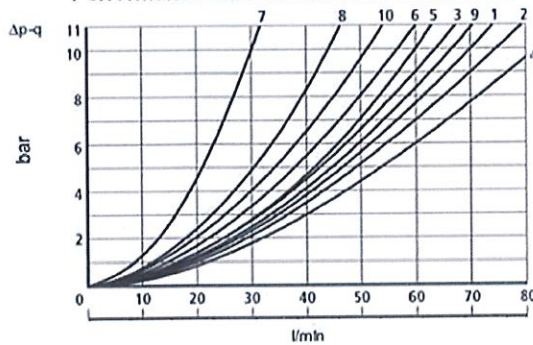
NG6 Solenoid valve

NG6 Solenoid valve - spool no.41A

Page: 1/1



Performance curves/Curvas de rendimiento



Spool / Corredera	Flow path / Trayectoria flujo			
	P-A	P-B	A-T	B-T
1	3	3	1	1
2	6	6	9	9
3	2	4	2	2
6	1	1	2	1
3A	-	4	2	-
41A	3	3	-	-
51A	1	1	3	1

Size NG-6

Max. Flow Rate 60 l/min

Operating Pressure · A, B, P: 315 bar
· T: 160 bar

Cast iron body IP 65

Part n°	Size	Voltage (V)	Max. flow (l/min)	Max. Press. (bar)	f (Hz)
KVNG6-41A-220CA H	NG-6	220 VAC	60	315	50
KVNG6-41A-12CC H	NG-6	12 VDC	60	315	
KVNG6-41A-24CC H	NG-6	24 VDC	60	315	

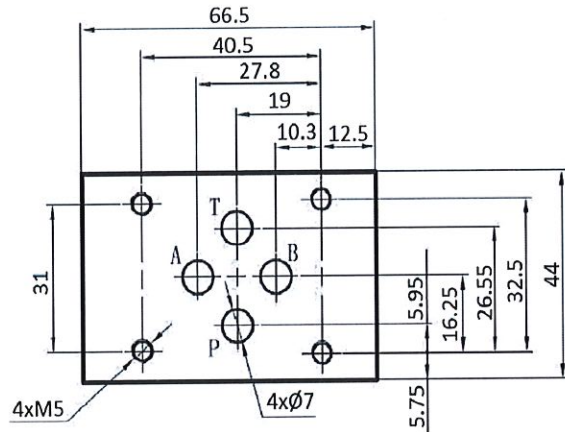
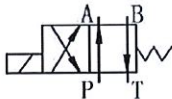
*** Review attached PDF***

Solenoid valves

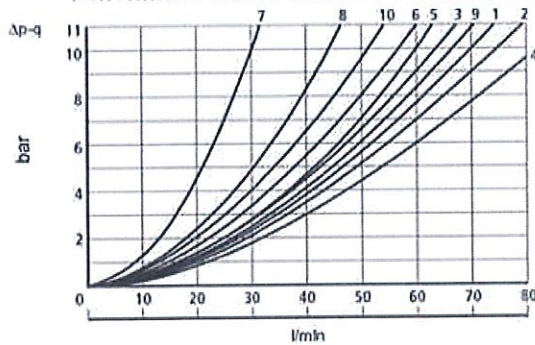
NG6 Solenoid valve

NG6 Solenoid valve - spool no.51A

Page: 1/2



Performance curves/Curvas de rendimiento



Spool / Corredera	Flow path/Trayectoria flujo			
	P-A	P-B	A-T	B-T
1	3	3	1	1
2	6	6	9	9
3	2	4	2	2
6	1	1	2	1
3A	-	4	2	-
41A	3	3	-	-
51A	1	1	3	1

Electric Connectors with LED

4 Screw Set Included M5x45

Operating Pressure
 · A, B, P: 315 bar
 · T: 160 bar

Cast iron body IP 65

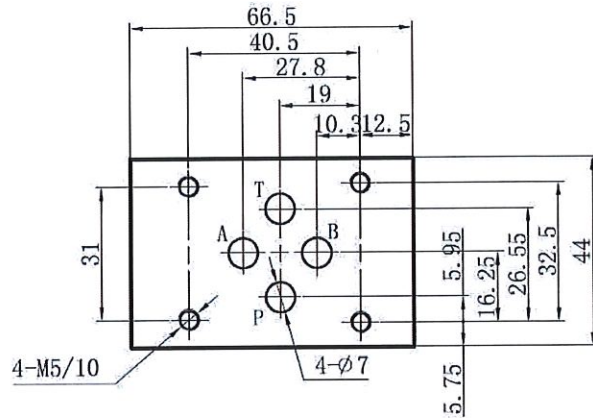
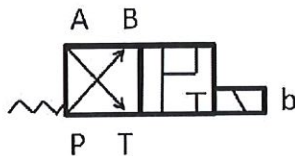
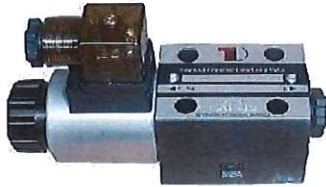
Part nº	Size	Voltage (V)	Max. flow (l/min)	Max. Press. (bar)	f (Hz)
KVNG6-51A-12CC H	NG-6	12 VDC	60	315	
KVNG6-51A-24CC H	NG-6	24 VDC	60	315	
KVNG6-51A-110CA H	NG-6	110 VAC	60	315	50
KVNG6-51A-220CA H	NG-6	220 VAC	60	315	50

Solenoid valves

NG6 Solenoid valve

NG6 Solenoid valve - spool no.61A

Page: 1/1



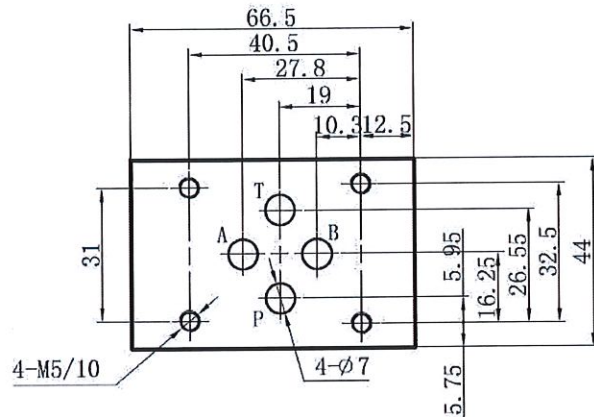
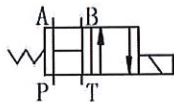
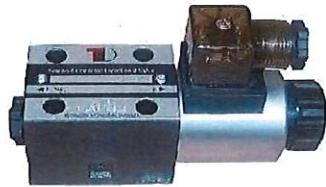
Cast iron body IP 65

Part n°	Size	Voltage (V)	Max. flow (l/min)	Max. Press. (bar)
KVNG6-61A-12CC H	NG-6	12 VDC	60	315

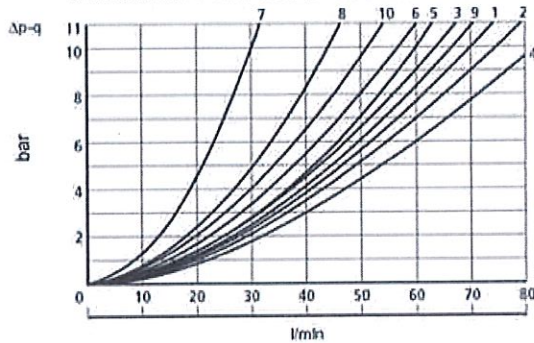
Solenoid valves

NG6 Solenoid valve

NG6 Solenoid valve - spool no.3B



Performance curves/Curvas de rendimiento



Spool / Corredera	Flow path/Trayectoria flujo			
	P-A	P-B	A-T	B-T
1	3	3	1	1
2	6	6	9	9
3	2	4	2	2
6	1	1	2	1
3A	-	4	2	-
41A	3	3	-	-
51A	1	1	3	1

Electric Connectors with LED

4 Screw Set Included M5x45

Operating Pressure
 · A, B, P ports: 315 bar
 · T port: 160 bar

Cast iron body IP 65

Part n°	Size	Voltage (V)	Max. flow (l/min)	Max. Press. (bar)	f (Hz)
KVNG6-3B-24CC H	NG-6	24 VDC	60	315	
KVNG6-3B-220CA H	NG-6	220 VAC	60	315	50

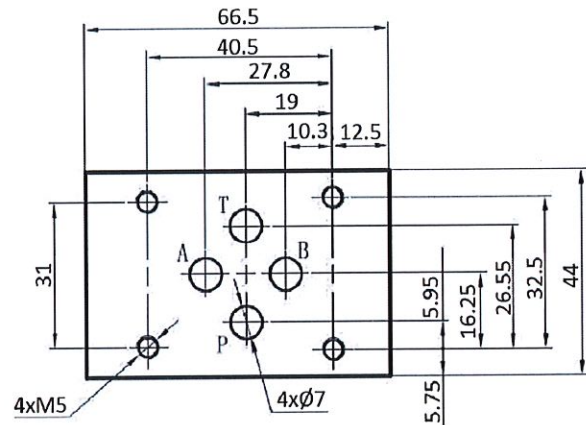
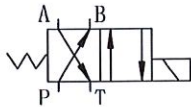
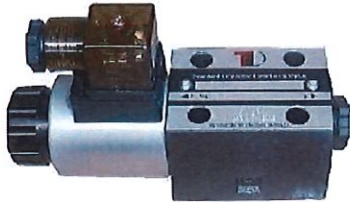
*** Review attached PDF***

Solenoid valves

NG6 Solenoid valve

NG6 Solenoid valve - spool no.51B

Page: 1/1



- Electric Connectors** with LED
- 4 Screw Set Included** M5x45
- Operating Pressure**
 - A, B, P: 315 bar
 - T: 160 bar
- Cast iron body** IP 65

Part n°	Size	Voltage (V)	Max. flow (l/min)	Max. Press. (bar)	f (Hz)
KVNG6-51B-12CC H	NG-6	12 VDC	60	315	
KVNG6-51B-24CC H	NG-6	24 VDC	60	315	
KVNG6-51B-110CA H	NG-6	110 VAC	60	315	50
KVNG6-51B-220CA H	NG-6	220 VAC	60	315	50

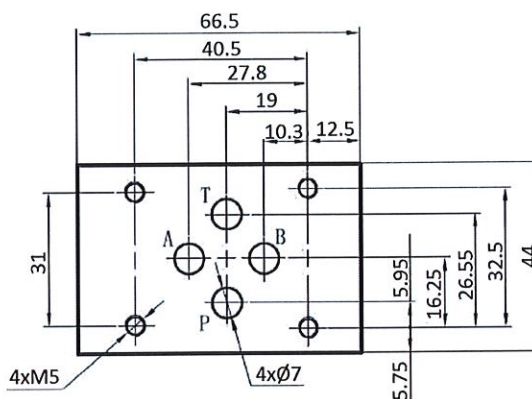
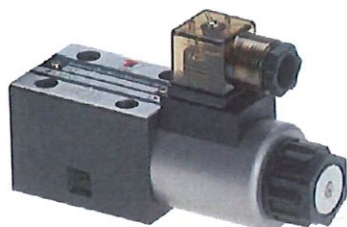
*** Review attached PDF***

Solenoid valves

NG6 Solenoid valve

NG6 Solenoid valve - spool no.1A

Page: 1/1



- Electric Connectors** with LED
- 4 Screw Set Included** M5x45
- Operating Pressure**
 - A, B, P: 315 bar
 - T: 160 bar
- Cast iron body** IP 65

Part n°	Size	Voltage (V)	Max. flow (l/min)	Max. Press. (bar)	f (Hz)
KVNG6-1A-12CC H	NG-6	12 VDC	60	315	
KVNG6-1A-24CC H	NG-6	24 VDC	60	315	
KVNG6-1A-220CA H	NG-6	220 VAC	60	315	50

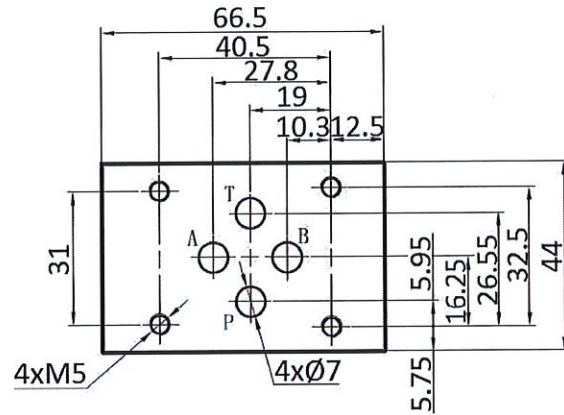
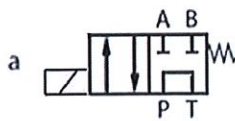
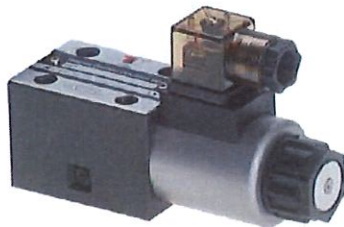
*** Review attached PDF***

Solenoid valves

NG6 Solenoid valve

NG6 Solenoid valve - spool no.2A

Page: 1/1



- Electric Connectors** with LED
- 4 Screw Set Included** M5x45
- Cast iron body** IP 65

Part n°	Size	Voltage (V)	Max. flow (l/min)	Max. Press. (bar)	f (Hz)
KVNG6-2A-12CC H	NG-6	12 VDC	60	315	
KVNG6-2A-24CC H	NG-6	24 VDC	60	315	
KVNG6-2A-110CA H	NG-6	220 VAC	60	315	50
KVNG6-2A-220CA H	NG-6	220 VAC	60	315	50

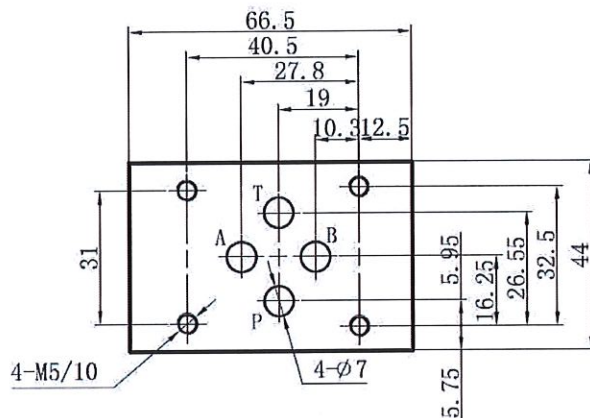
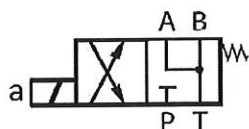
*** Review attached PDF***

Solenoid valves

NG6 Solenoid valve

NG6 Solenoid valve - spool no.6A

Page: 1/1



- Electric Connectors** with LED
- 4 Screw Set Included** M5x45
- Operating Pressure**
 - A, B, P: 315 bar
 - T: 160 bar
- Cast iron body** IP 65

Part n°	Size	Voltage (V)	Max. flow (l/min)	Max. Press. (bar)
KVNG6-6A-12CC H	NG-6	12 VDC	60	315
KVNG6-6A-24CC H	NG-6	24 VDC	60	315
KVNG6-6A-220CA H	NG-6	220 VAC	60	315

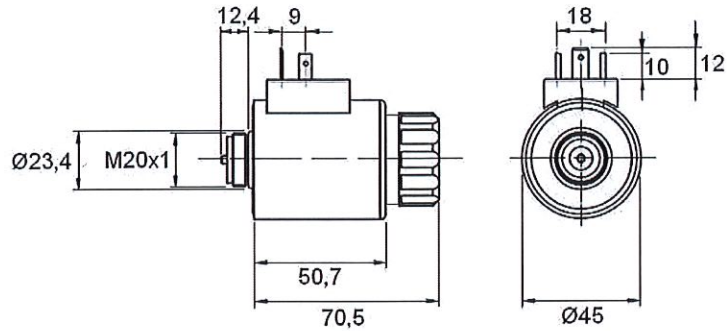
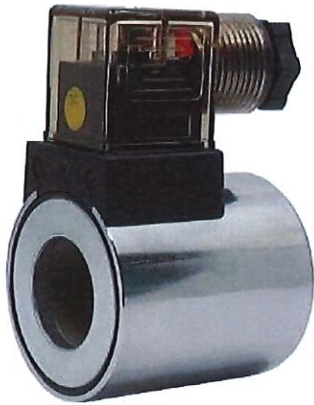
*** Review attached PDF***

Solenoid valves

NG6 Solenoid valve

NG6 Coils

Page: 1/1



Power Consumption ≤ 30 W

Insulation Class F

Working Pressure 210 bar

ED 100%

IP class IP 65

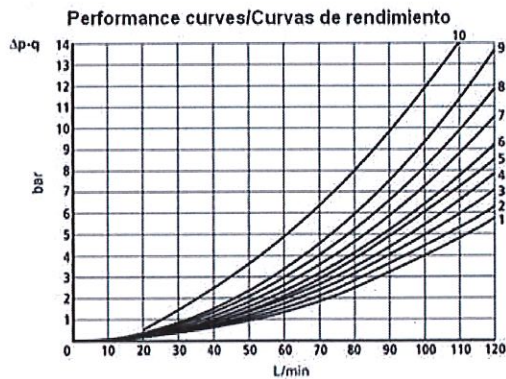
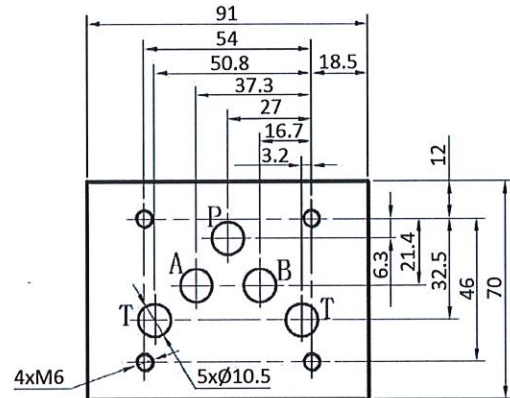
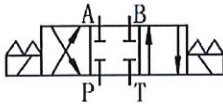
Part n°	Size	Voltage (V)	f (Hz)
MR-6-12CC H	NG-6	12 VDC	
MR-6-24CC H	NG-6	24 VDC	
MR-6-48CC H	NG-6	48 VDC	
MR-6-110CA H	NG-6	110 VAC	50
MR-6-220CA H	NG-6	220 VAC	50
MR-6-12060CA H	NG-6	120VAC (60 Hz)	60

Solenoid valves

NG10 Solenoid valve

NG10 Solenoid valve - spool no.1

Page: 1/2



Spool / Corredera	Flow path/Trayectoria flujo			
	P-A	P-B	A-T	B-T
1	1	1	4	4
2	3	3	6	7
3	1	1	6	7
6	1	1	3	3
3A	-	1	6	-
41A	3	3	-	-
51A	3	3	4	5

- Electric Connectors** with LED
- 4 Screw Set Included** M6 x 40
- Operating Pressure**
 - A, B, P: 315 bar
 - T: 160 bar

Cast iron body

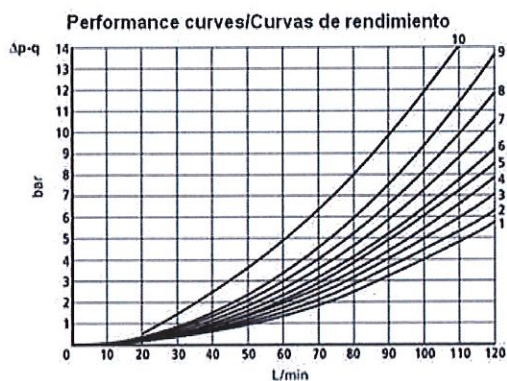
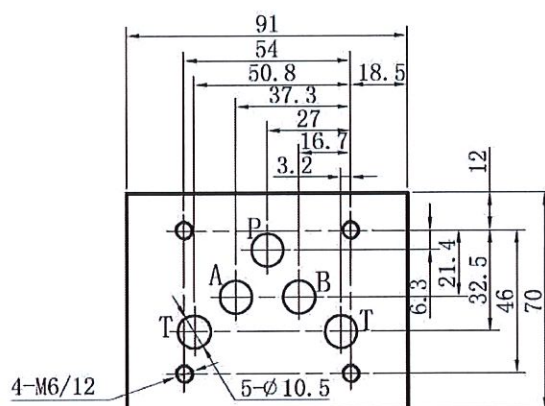
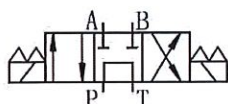
Part n°	Size	Voltage (V)	Max. flow (l/min)	Max. Press. (bar)	f (Hz)	Ø nucleus
KVNG10-1-12CC H	NG-10	12 VDC	120	315		31
KVNG10-1-24CC H	NG-10	24 VDC	120	315		31
KVNG10-1-110CA H	NG-10	110 VAC	120	315	50	31
KVNG10-1-220CA H	NG-10	220 VAC	120	315	50	31

Solenoid valves

NG10 Solenoid valve

NG10 Solenoid valve - spool no.2

Page: 1/2



Spool / Corredera	Flow path/Trayectoria flujo			
	P-A	P-B	A-T	B-T
1	1	1	4	4
2	3	3	6	7
3	1	1	6	7
6	1	1	3	3
3A	-	1	6	-
41A	3	3	-	-
51A	3	3	4	5

- Electric Connectors** with LED
- 4 Screw Set Included** M6 x 40
- Operating Pressure**
 - A, B, P: 315 bar
 - T: 160 bar

Cast iron body

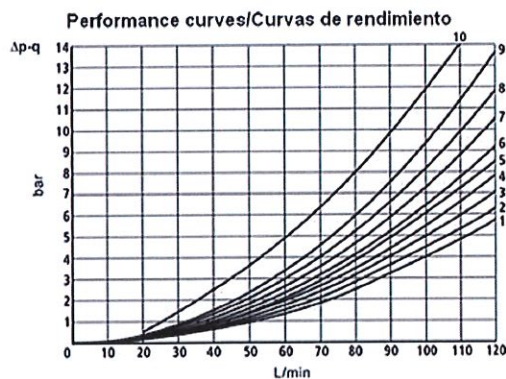
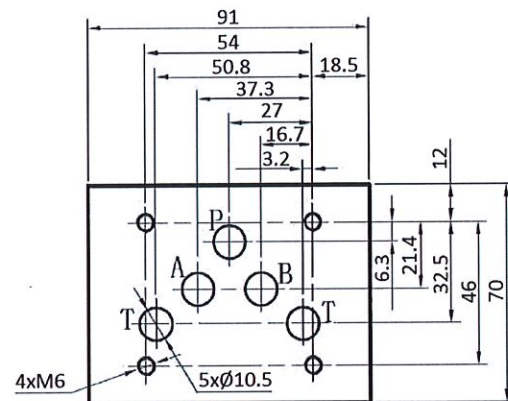
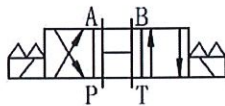
Part n°	Size	Voltage (V)	Max. flow (l/min)	Max. Press. (bar)	f (Hz)	Ø nucleus
KVNG10-2-12CC H	NG-10	12 VDC	90	315		31
KVNG10-2-24CC H	NG-10	24 VDC	90	315		31
KVNG10-2-110CA H	NG-10	110 VAC	90	315	50	31
KVNG10-2-220CA H	NG-10	220 VAC	90	315	50	31

Solenoid valves

NG10 Solenoid valve

NG10 Solenoid valve - spool no.3

Page: 1/2



Spool / Corredera	Flow path / Trayectoria flujo			
	P-A	P-B	A-T	B-T
1	1	1	4	4
2	3	3	6	7
3	1	1	6	7
6	1	1	3	3
3A	-	1	6	-
41A	3	3	-	-
51A	3	3	4	5

Electric Connectors with LED

4 Screw Set Included M6 x 40

Operating Pressure · A, B, P: 315 bar
· T: 160 bar

Cast iron body

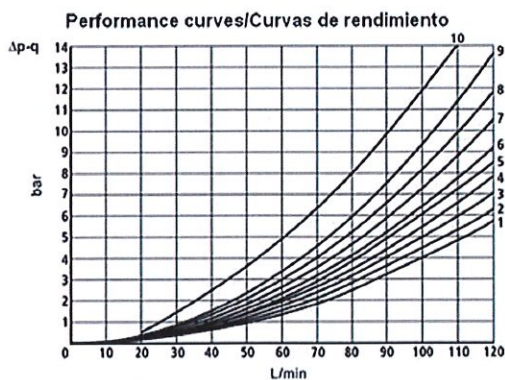
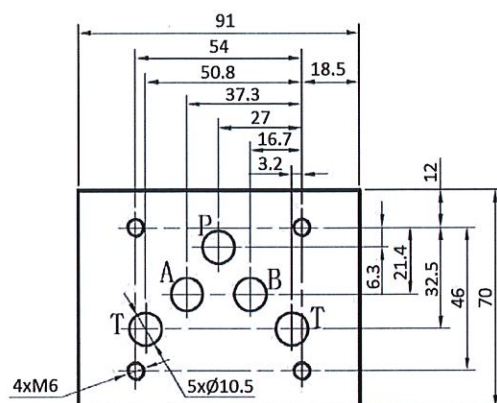
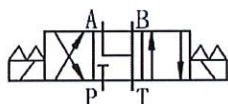
Part n°	Size	Voltage (V)	Max. flow (l/min)	Max. Press. (bar)	f (Hz)	Ø nucleus
KVNG10-3-12CC H	NG-10	12 VDC	100	315		31,4
KVNG10-3-24CC H	NG-10	24 VDC	100	315		31
KVNG10-3-110CA H	NG-10	110 VAC	100	315	50	31,4
KVNG10-3-220CA H	NG-10	220 VAC	100	315	50	31

Solenoid valves

NG10 Solenoid valve

NG10 Solenoid valve - spool no.6

Page: 1/2



Spool / Corredera	Flow path / Trayectoria flujo			
	P-A	P-B	A-T	B-T
1	1	1	4	4
2	3	3	6	7
3	1	1	6	7
6	1	1	3	3
3A	-	1	6	-
41A	3	3	-	-
51A	3	3	4	5

- Electric Connectors** with LED
- 4 Screw Set Included** M6 x 40
- Operating Pressure**
 - A, B, P: 315 bar
 - T: 160 bar

Cast iron body

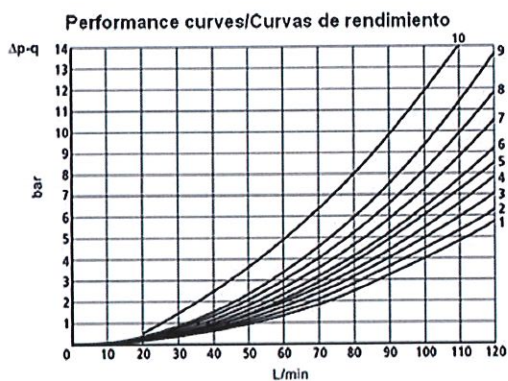
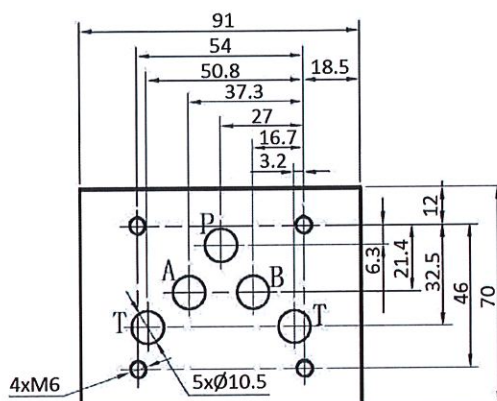
Part n°	Size	Voltage (V)	Max. flow (l/min)	Max. Press. (bar)	f (Hz)	Ø nucleus
KVNG10-6-12CC H	NG-10	12 VDC	120	315		31
KVNG10-6-24CC H	NG-10	24 VDC	120	315		31
KVNG10-6-110CA H	NG-10	110 VAC	120	315	50	31
KVNG10-6-220CA H	NG-10	220 VAC	120	315	50	31

Solenoid valves

NG10 Solenoid valve

NG10 Solenoid valve - spool no.3A

Page: 1/2



Spool / Corredera	Flow path / Trayectoria flujo			
	P-A	P-B	A-T	B-T
1	1	1	4	4
2	3	3	6	7
3	1	1	6	7
6	1	1	3	3
3A	-	1	6	-
41A	3	3	-	-
51A	3	3	4	5

Electric Connectors with LED

4 Screw Set Included M6 x 40

Operating Pressure
 · A, B, P: 315 bar
 · T: 160 bar

Cast iron body

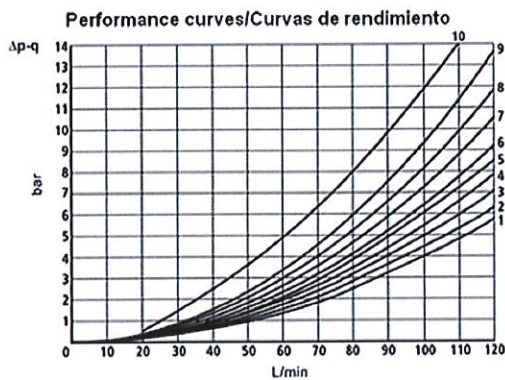
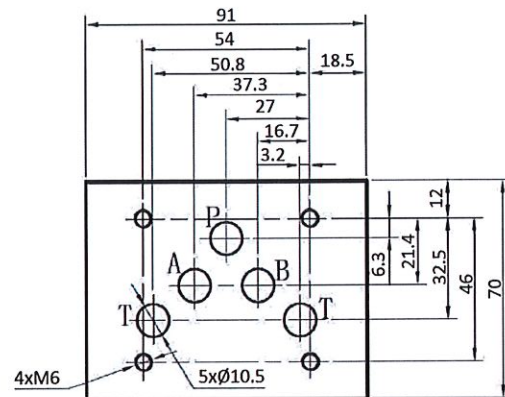
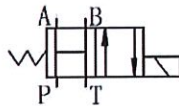
Part nº	Size	Voltage (V)	Max. flow (l/min)	Max. Press. (bar)	f (Hz)	Ø nucleus
KVNG10-3A-12CC H	NG-10	12 VDC	120	315		31
KVNG10-3A-24CC H	NG-10	24 VDC	120	315		31
KVNG10-3A-110CA H	NG-10	110 VAC	120	315	50	31
KVNG10-3A-220CA H	NG-10	220 VAC	120	315	50	31

Solenoid valves

NG10 Solenoid valve

NG10 Solenoid valve - spool no.3B

Page: 1/1



Spool / Corredera	Flow path / Trayectoria flujo			
	P-A	P-B	A-T	B-T
1	1	1	4	4
2	3	3	6	7
3	1	1	6	7
6	1	1	3	3
3A	-	1	6	-
41A	3	3	-	-
51A	3	3	4	5

- Electric Connectors** with LED
- 4 Screw Set Included** M6 x 40
- Operating Pressure**
 - A, B, P: 315 bar
 - T: 160 bar

Cast iron body

Part n°	Size	Voltage (V)	Max. flow (l/min)	Max. Press. (bar)	Ø nucleus
KVNG10-3B-12CC H	NG-10	12 VDC	120	315	31,4
KVNG10-3B-24CC H	NG-10	24 VDC	120	315	31,4

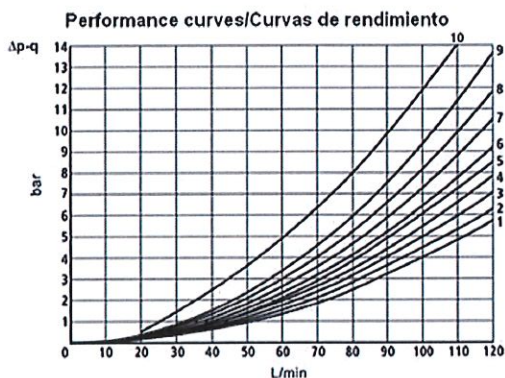
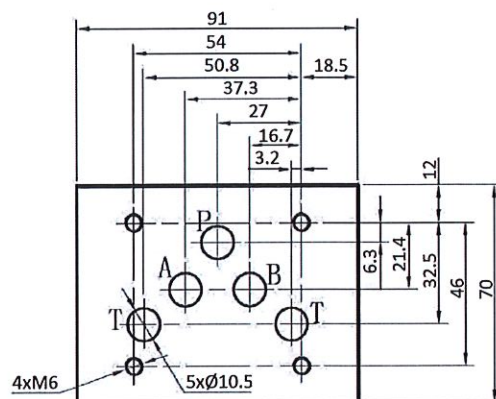
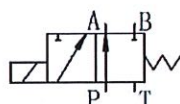
*** Review attached PDF***

Solenoid valves

NG10 Solenoid valve

NG10 Solenoid valve - spool no.41A

Page: 1/1



Spool / Corredera	Flow path / Trayectoria flujo			
	P-A	P-B	A-T	B-T
1	1	1	4	4
2	3	3	6	7
3	1	1	6	7
6	1	1	3	3
3A	-	1	6	-
41A	3	3	-	-
51A	3	3	4	5

- Electric Connectors** with LED
- 4 Screw Set Included** M6 x 40
- Operating Pressure**
 - A, B, P: 315 bar
 - T: 160 bar

Cast iron body

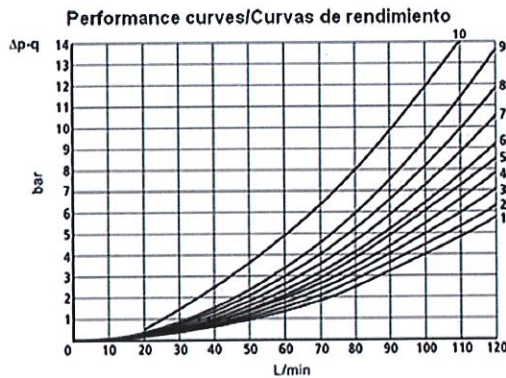
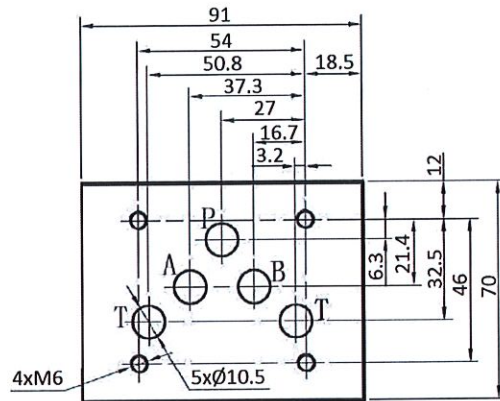
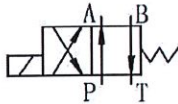
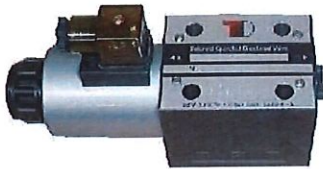
Part n°	Size	Voltage (V)	Max. flow (l/min)	Max. Press. (bar)	f (Hz)	Ø nucleus
KVNG10-41A-12CC H	NG-10	12 VDC	120	315		31,4
KVNG10-41A-24CC H	NG-10	24 VDC	120	315		31
KVNG10-41A-220CA H	NG-10	220 VAC	120	315	50	31,4

*** Review attached PDF***

Solenoid valves

NG10 Solenoid valve

NG10 Solenoid valve - spool no.51A



Spool / Corredera	Flow pathy / Trayectoria flujo			
	P-A	P-B	A-T	B-T
1	1	1	4	4
2	3	3	6	7
3	1	1	6	7
6	1	1	3	3
3A	-	1	6	-
41A	3	3	-	-
51A	3	3	4	5

- Electric Connectors** with LED
- 4 Screw Set Included** M6 x 40
- Operating Pressure**
 - A, B, P: 315 bar
 - T: 160 bar

Cast iron body

Part nº	Size	Voltage (V)	Max. flow (l/min)	Max. Press. (bar)	f (Hz)	Ø nucleus
KVNG10-51A-12CC H	NG-10	12 VDC	120	315		31,4
KVNG10-51A-24CC H	NG-10	24 VDC	120	315		31
KVNG10-51A-110CA H	NG-10	110 VAC	120	315	50	31,4
KVNG10-51A-220CA H	NG-10	220 VAC	120	315	50	31

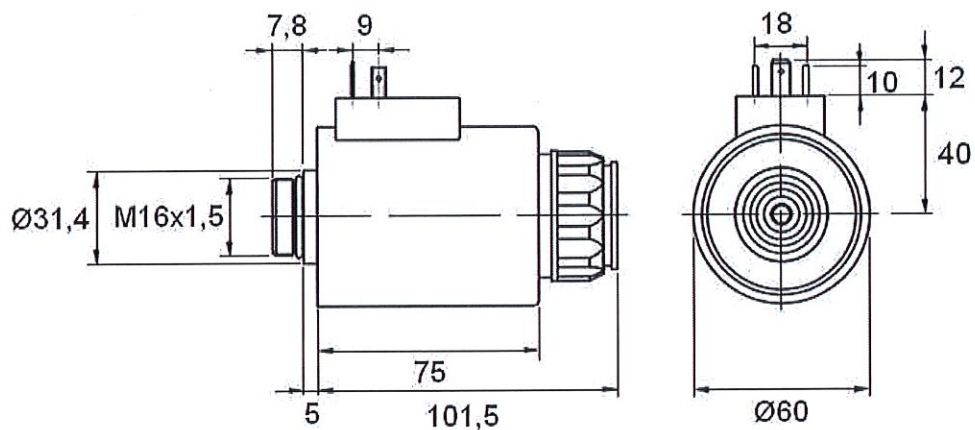
Solenoid valves

NG10 Solenoid valve

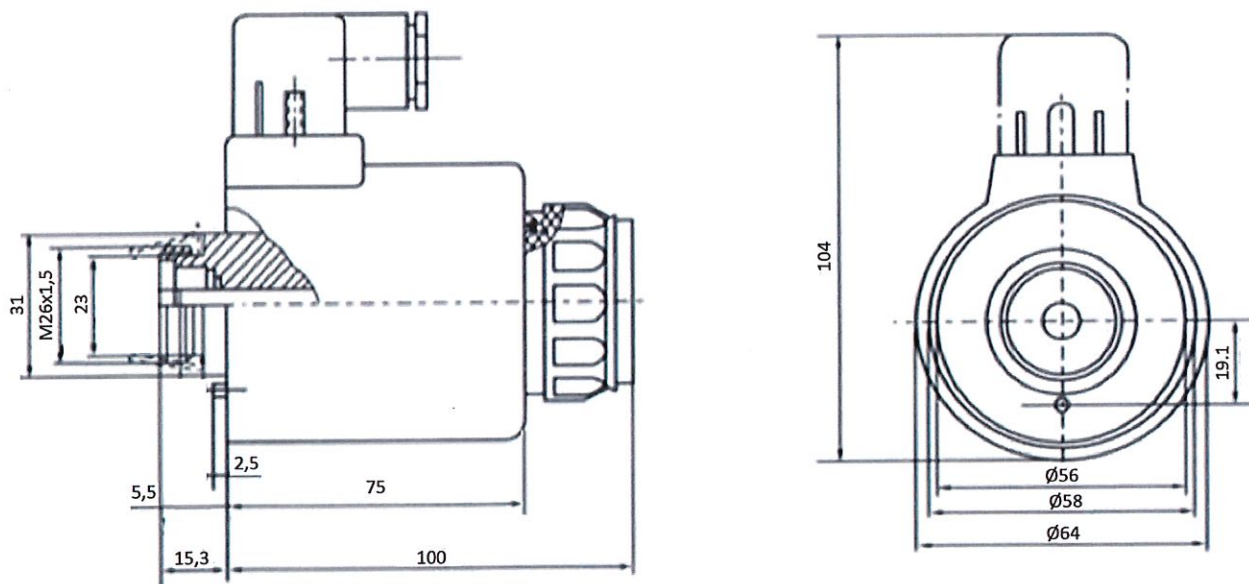
NG10 Coils

Page: 1/2

MR-10- ... H:



MR-10- H 1:



Power Consumption <=37 W

Insulation Class F

Working Pressure 210 bar

ED 100%

IP class IP 65

Solenoid valves

NG10 Solenoid valve

NG10 Coils

Page: 2/2

Part n°	Size	Voltage (V)	f (Hz)	Ø nucleus
MR-10-12CC H	NG-10	12 VDC		31,4
MR-10-24CC H	NG-10	24 VDC		31,4
MR-10-110AC H	NG-10	110 VAC	50	31,4
MR-10-220AC H	NG-10	220 VAC	50	31,4
MR-10-12CC H 1	NG-10	12 VDC		31
MR-10-24CC H 1	NG-10	24 VDC		31
MR-10-110CA H 1	NG-10	110 VAC	50	31
MR-10-220CA H 1	NG-10	220 VAC	50	31
MR-10-48CC H 1	NG-10	48 VDC		31
MR-10-12060CA H	NG-10	120VAC	60	