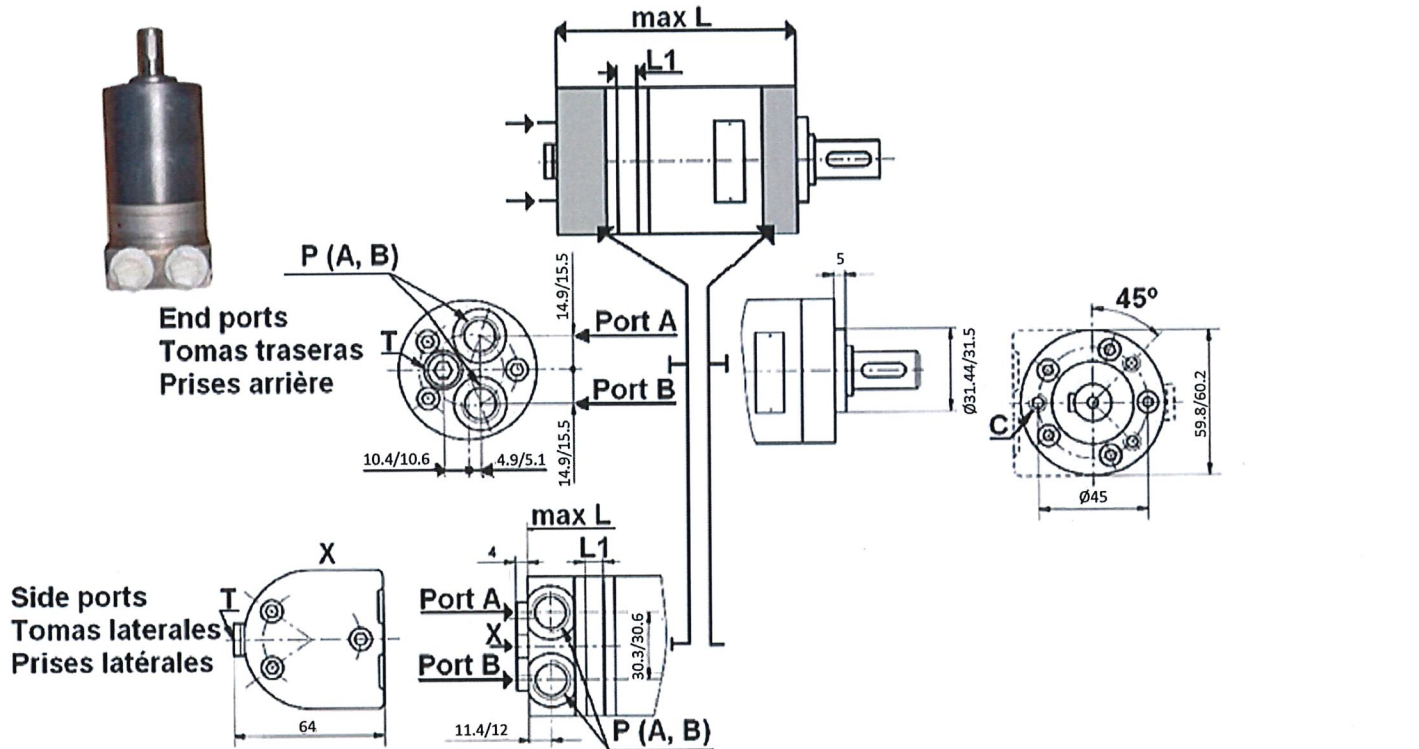


Hydraulic motors

Hydraulic motors

MOMM type motor

Page: 1/2



Max. pressure cont.: MOMM50=70 bar; Others=100

Ports: ...E=End; ...S=Side

Shaft: cylindrical shaft, diameter 16 mm

Part n°	R1	Max. flow (l/min)	Max. press. cont.	Max. press. interm.	Max. Peak press.	cm ³ /rev	R.P.M. cont.	R.P.M. int.	Max. torque cont.	Max. torque peak	Max. power cont.	Max. flow cont.	L1	L
MOMM8 E	3/8" BSP	16	100	140	200	8.2	1.950	2.450	1,1	2,1	1,8	16	3,5	104,5
MOMM8 S	3/8" BSP	16	100	140	200	8.2	1.950	2.450	1,1	2,1	1,8	16	3,5	106
MOMM12.5 E	3/8" BSP	20	100	140	200	12.9	1.550	1.940	1,6	3,3	2,4	20	5,5	106,5
MOMM12.5 S	3/8" BSP	20	100	140	200	12.9	1.550	1.940	1,6	3,3	2,4	20	5,5	108
MOMM20 E	3/8" BSP	20	100	140	200	19.9	1.000	1.250	2,5	5,1	2,4	20	8,5	109,5
MOMM20 S	3/8" BSP	20	100	140	200	19.9	1.000	1.250	2,5	5,1	2,4	20	8,5	111
MOMM32 E	3/8" BSP	20	100	140	160	31.6	630	800	4	6,4	2,4	20	13,5	114,5
MOMM32 S	3/8" BSP	20	100	140	160	31.6	630	800	4	6,4	2,4	20	13,5	116

Hydraulic motors

Hydraulic motors

MOMM type motor

Page: 2/2

Part n°	R1	Max. flow (l/min)	Max. press. cont.	Max. press. interm.	Max. Peak press.	cm ³ /rev	R.P.M. cont.	R.P.M. int.	Max. torque cont.	Max. torque peak	Max. power cont.	Max. flow cont.	L1	L
MOMM40 E	3/8" BSP	20	90	140	160	39.8	500		4,5	8,2	2,2	20	17	118
MOMM40 S	3/8" BSP	20	90	140	160	39.8	500		4,5	8,2	2,2	20	17	119,5
MOMM50 E	3/8" BSP	20	70	140	160	50.3	400	500	4,6	1	1,8	20	21,5	122,5
MOMM50 S	3/8" BSP	20	70	140	160	50.3	400	500	4,6	1	1,8	20	21,5	124

*** Review attached PDF***

*Intermittent operation rating applies to 10% of every minute.

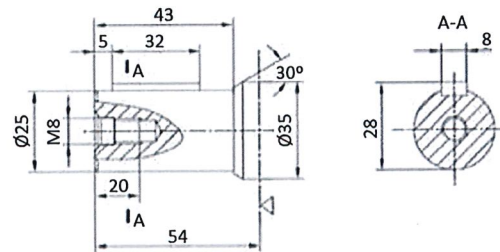
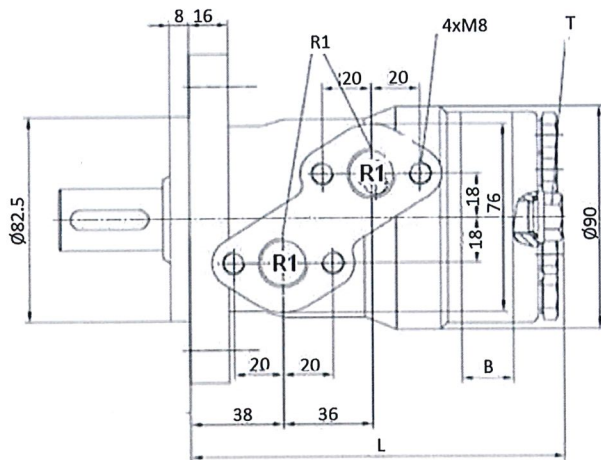
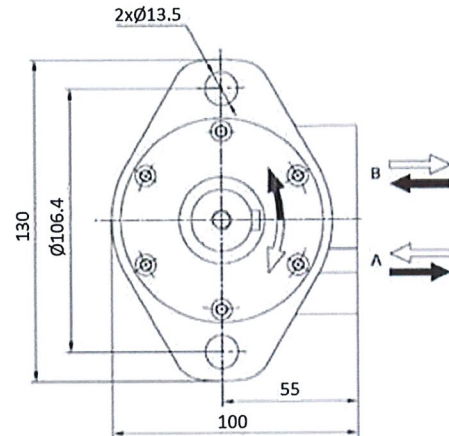
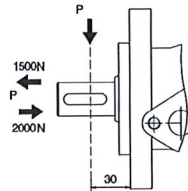
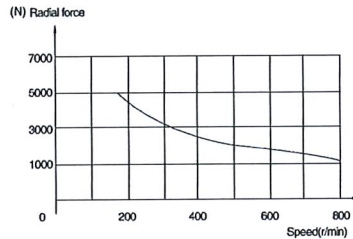
*Peak load rating applies to 1% of every minute.

Hydraulic motors

Hydraulic motors

MOMP type motor

Page: 1/1



Shaft: cylindrical shaft, diameter 25 mm

Max. flow interm.: MOMP50 =60 (l/min); Others=75 (l/min)

T: drainage line, thread 1/4"

(Power in kW)

(Torque in daN.m)

Part n°	R1	Max. flow (l/min)	Max. press. cont.	Max. press. interm.	Max. Peak press.	cm ³ / rev	R.P.M. cont.	R.P.M. int.	Max. torque cont.	Max. torque peak	Max. power cont.	Max. flow cont.	B	L
MOMP50	1/2" BSP	40	140	175	210	50	800	1.000	8,9	13	7	40	7	141
MOMP80	1/2" BSP	60	140	175	210	80	760	940	14,9	21,9	10,1	60	11	145
MOMP100	1/2" BSP	60	140	175	210	100	600	750	19	26,5	10,3	60	13	147
MOMP125	1/2" BSP	60	140	175	210	125	485	600	23,4	36,2	10	60	16	150
MOMP160	1/2" BSP	60	140	175	210	160	380	475	31	42,6	10	60	21	155
MOMP200	1/2" BSP	60	135	160	210	200	302	380	35,9	54,5	9,6	60	26	160
MOMP250	1/2" BSP	60	105	140	175	250	240	302	35,1	58,5	7,4	60	32	166
MOMP315	1/2" BSP	60	80	115	160	315	190	235	34,2	68,4	5,6	60	42	176
MOMP400	1/2" BSP	60	65	90	140	400	150	190	34,8	68,8	4,6	60	52	186

*** Review attached PDF***

*Intermittent operation rating applies to 6 seconds of every minute.

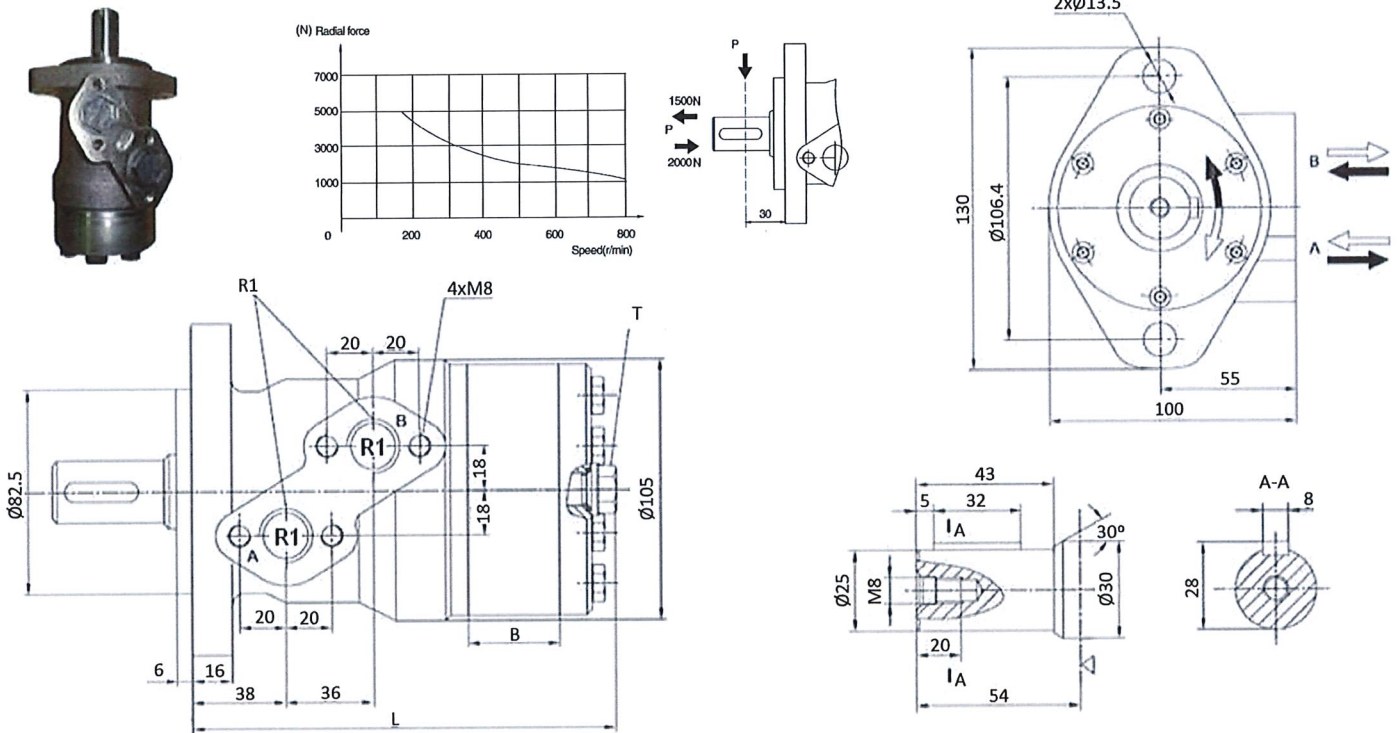
*Peak load rating applies to 0.6 seconds of every minute.

Hydraulic motors

Hydraulic motors

MOMR type motor 25 mm Ø

Page: 1/1



Shaft: cylindrical shaft, diameter 25 mm

Max. flow interm.: MOMR50 =50 (l/min); Others=75 (l/min)

T: drainage line, thread 1/4"

(Power in kW)

(Torque in daN.m)

Part n°	R1	Max. flow (l/min)	Max. press. cont.	Max. press. interm.	Max. Peak press.	cm ³ / rev	R.P.M. cont.	R.P.M. int.	Max. torque cont.	Max. torque peak	Max. power cont.	Max. flow cont.	B	L
MOMR40	1/2" BSP	40	100	175	210	40	770	1.000	50	100	6,9	40	9	139
MOMR50	1/2" BSP	40	140	175	200	50	770	970	93	135	7	40	9	139
MOMR80	1/2" BSP	60	140	175	200	80	745	940	152	216	10	60	14	144
MOMR100	1/2" BSP	60	140	175	200	100	600	750	194	270	10	60	17,5	148
MOMR125	1/2" BSP	60	140	175	200	125	470	600	237	338	10	60	22	152
MOMR160	1/2" BSP	60	140	175	200	160	370	470	310	433	10	60	28	158
MOMR200	1/2" BSP	60	140	175	200	200	300	370	369	509	8	60	35	165
MOMR250	1/2" BSP	60	110	140	160	250	240	300	380	540	6	60	44	174
MOMR315	1/2" BSP	60	90	110	130	315	190	240	380	540	5	60	56	186
MOMR400	1/2" BSP	60	70	90	110	400	150	190	380	540	4	60	70	200

*** Review attached PDF***

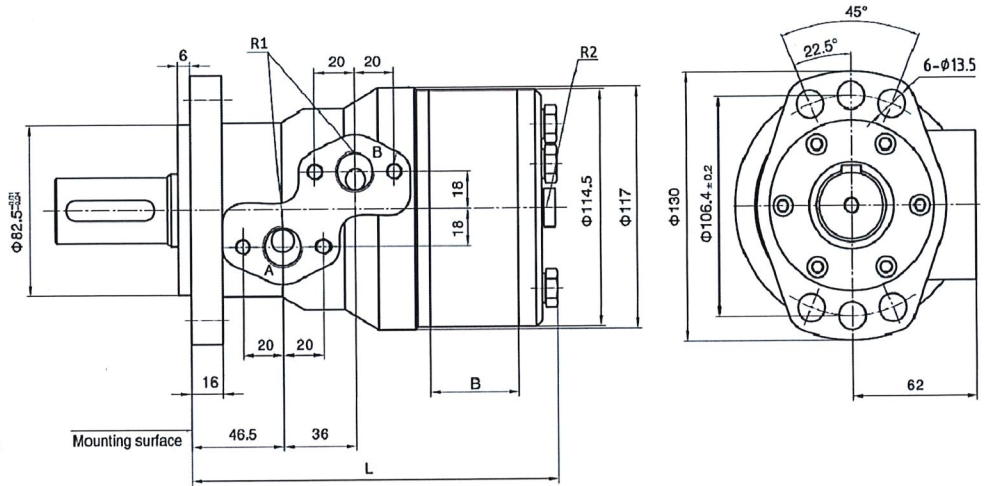
*Intermittent operation rating applies to 6 seconds of every minute.

*Peak load rating applies to 0.6 seconds of every minute.

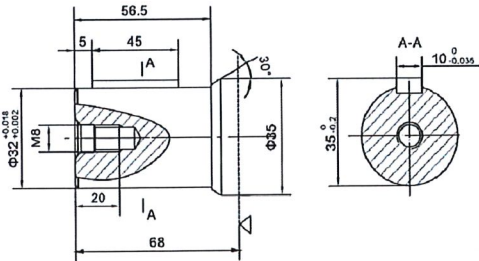
Hydraulic motors

Hydraulic motors

MOMH type motor



Φ32Cylindrical shaft, parallel key10 × 8 × 45



Part nº	R1	R2	Max. press. cont.	Max. press. interm.	Max. Peak press.	cm ³ / rev	R.P.M. cont.	Max. torque cont.	Max. torque peak	Max. power cont.	Max. flow cont.	B	L
MOMH160	1/2" BSP	1/4" BSP	155	175	200	160	430	325	425	13	75	22	162
MOMH200	1/2" BSP	1/4" BSP	160	190	220	200	370	425	590	13,8	75	28	168
MOMH250	1/2" BSP	1/4" BSP	160	190	220	250	295	530	735	13,8	75	35	175
MOMH315	1/2" BSP	1/4" BSP	150	180	210	315	235	610	875	12,5	75	44	184
MOMH400	1/2" BSP	1/4" BSP	140	170	200	400	185	825	1.055	11,5	75	56	196
MOMH500	1/2" BSP	1/4" BSP	120	150	180	500	155	720	1.090	9,8	75	65	205

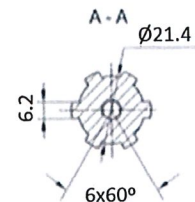
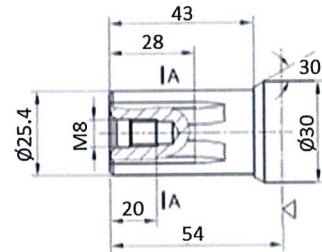
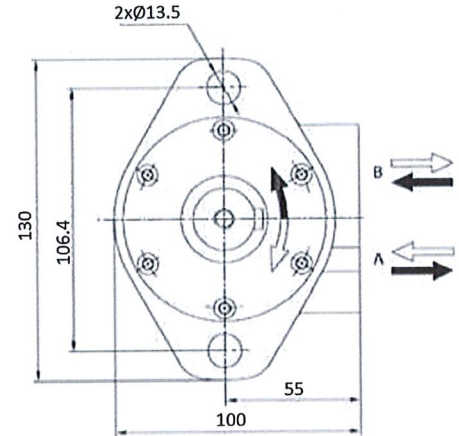
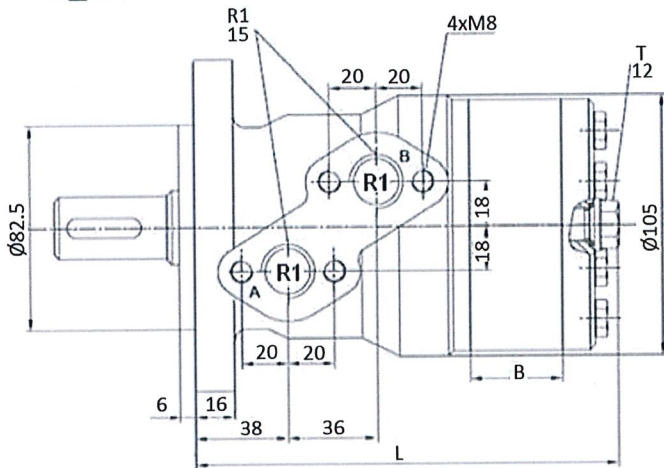
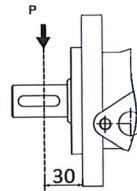
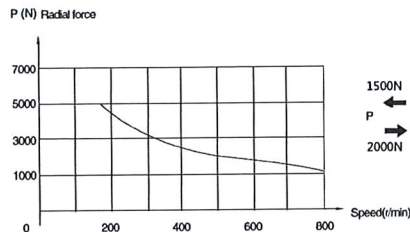
*** Review attached PDF***

Hydraulic motors

Hydraulic motors

MOMR type motor with splined shaft

Page: 1/1



Shaft: splined shaft, diameter 25,4 mm

Max.flow interm: MOMR50EST= 50 l/min, Otros 75 l/min

T: drainage line, thread 1/4"

(Power in kW)

(Torque in DaN.m)

Part nº	R1	Max. flow (l/min)	Max. press. cont.	Max. Peak press.	cm ³ / rev	R.P.M. cont.	R.P.M. int.	Max. torque cont.	Max. torque peak	Max. power cont.	Max. flow cont.	B	L
MOMR50EST	1/2" BSP	40	140	210	50	770	970	10	16,8	6,9	40	9	139
MOMR80EST	1/2" BSP	60	160	210	80	745	940	19,6	27	12,6	60	14	144
MOMR100EST	1/2" BSP	60	160	210	100	600	750	24,2	32,1	12	60	17,5	148
MOMR125EST	1/2" BSP	60	160	210	125	470	600	27,1	36,8	12,4	60	22	152
MOMR160EST	1/2" BSP	60	160	210	160	370	470	38,9	45,8	11,4	60	28	158
MOMR200EST	1/2" BSP	60	135	210	200	300	370	38,5	56	9	60	35	165
MOMR250EST	1/2" BSP	60	105	200	250	240	300	38,8	65,5	6,4	60	44	174
MOMR315EST	1/2" BSP	60	85	175	315	190	240	38,5	83	6	60	56	186
MOMR400EST	1/2" BSP	60	65	175	400	150	190	35,5	71,3	4,7	60	70	200

*** Review attached PDF***

*Intermittent operation rating applies to 6 seconds of every minute.

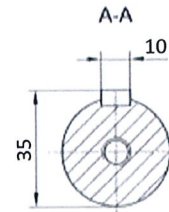
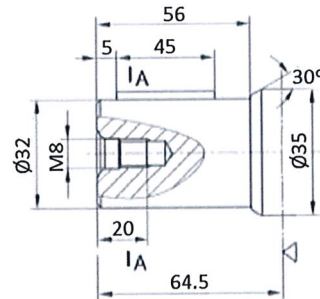
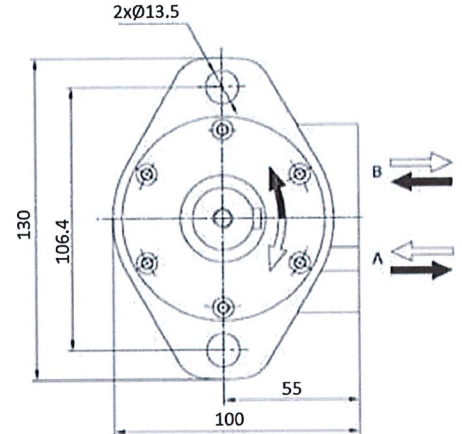
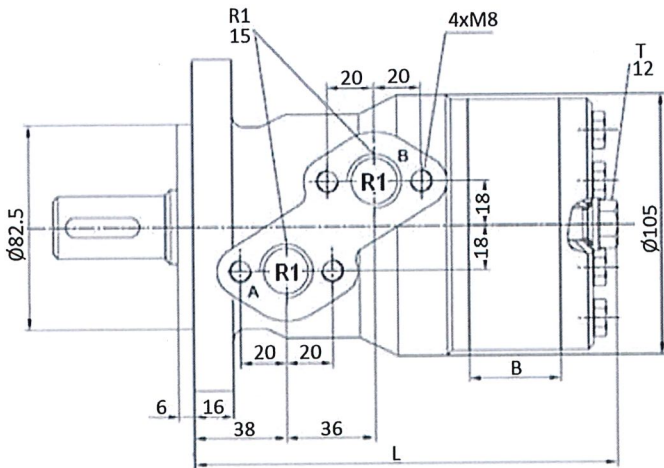
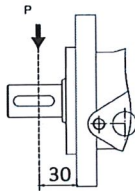
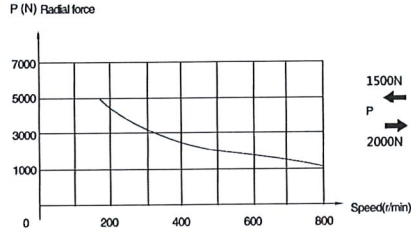
*Peak load rating applies to 0.6 seconds of every minute.

Hydraulic motors

Hydraulic motors

MOMR type motor with 32mm shaft

Page: 1/1



Shaft: cylindrical shaft, diameter 32 mm

Max. flow interm: MOMR50-32= 50 l/min, Others= 75 l/min

T: drainage line, thread 1/4"

(Power in kW)

(Torque in daN.m)

Part n°	R1	Max. flow (l/min)	Max. press. cont.	Max. press. interm.	Max. Peak press.	cm ³ /rev	R.P.M. cont.	R.P.M. int.	Max. torque cont.	Max. torque peak	Max. power cont.	B	L
MOMR50-32	1/2" BSP	40	140	175	210	50	770	970	10	16,8	6,9	9	139
MOMR80-32	1/2" BSP	60	160	180	210	80	745	940	19,6	27	12,6	14	144
MOMR100-32	1/2" BSP	60	160	180	210	100	600	750	24,2	32,1	12	17,5	148
MOMR125-32	1/2" BSP	60	160	180	210	125	470	600	27,1	36,8	12,4	22	152
MOMR160-32	1/2" BSP	60	160	180	210	160	470	600	27,1	36,8	12,4	22	152
MOMR200-32	1/2" BSP	60	135	175	210	200	300	370	38,5	56	9	35	165
MOMR250-32	1/2" BSP	60	105	160	200	250	240	300	38,8	65,5	6,4	44	174
MOMR315-32	1/2" BSP	60	85	130	175	315	190	240	38,5	83	6	56	186
MOMR400-32	1/2" BSP	60	65	75	175	400	150	190	35,5	71,3	4,7	70	200

*** Review attached PDF***

*Intermittent operation rating applies to 6 seconds of every minute.

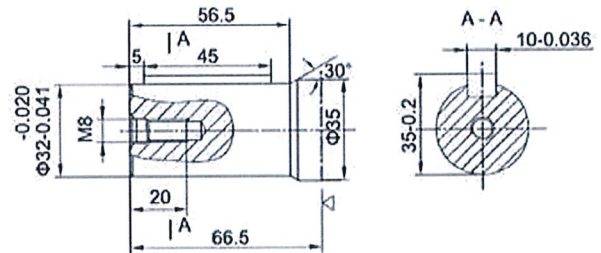
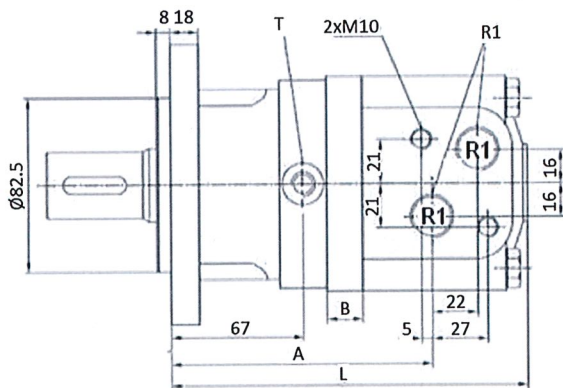
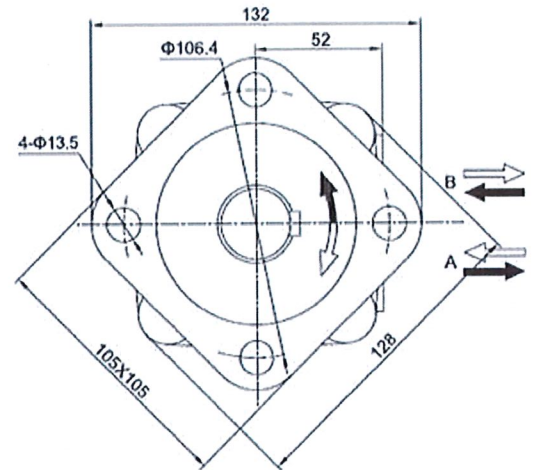
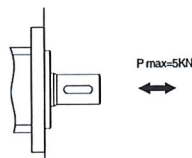
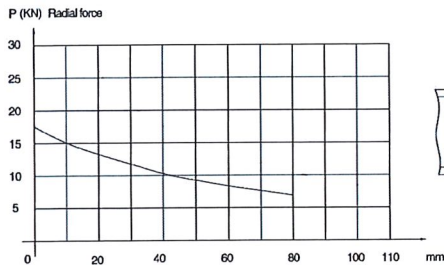
*Peak load rating applies to 0.6 seconds of every minute.

Hydraulic motors

Hydraulic motors

MOMS type motor

Page: 1/1



Shaft: cylindrical shaft, diameter 32 mm

Max. flow interm.: MOMS80 =80 (l/min); Others=90 (l/min)

T: drainage line, thread 1/4"

(Power in kW)

(Torque in daN.m)

Part n°	R1	Max. flow (l/min)	Max. press. cont.	Max. press. interm.	Max. Peak press.	cm ³ / rev	R.P.M. cont.	R.P.M. int.	Max. torque cont.	Max. torque peak	Max. power cont.	A	B	L
MOMS80	1/2" BSP	65	175	210	225	80	805	1.000	19,8	26	16,4	124	11	167
MOMS100	1/2" BSP	75	175	210	225	100	746	900	24,4	32,2	19,4	127	14,5	170
MOMS125	1/2" BSP	75	175	210	225	125	598	718	30,7	40,5	20	132	19	175
MOMS160	1/2" BSP	75	160	210	225	160	465	560	34	48,5	12	138	25	181
MOMS200	1/2" BSP	75	150	180	225	200	373	447	39,5	64,8	14	145	32	188
MOMS250	1/2" BSP	75	140	175	200	250	298	360	45	68	13,6	154	41	197
MOMS315	1/2" BSP	75	120	140	185	315	236	290	54,1	84	11,5	166	53	208
MOMS400	1/2" BSP	75	100	120	140	400	187	230	58	85	10	180	67	222

*** Review attached PDF***

*Intermittent operation applies to 6 seconds of every minute.

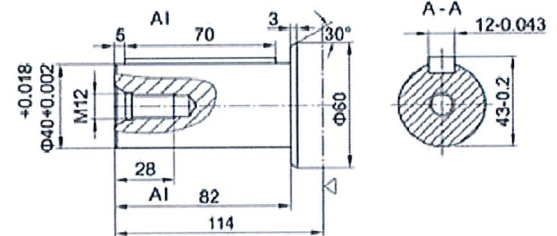
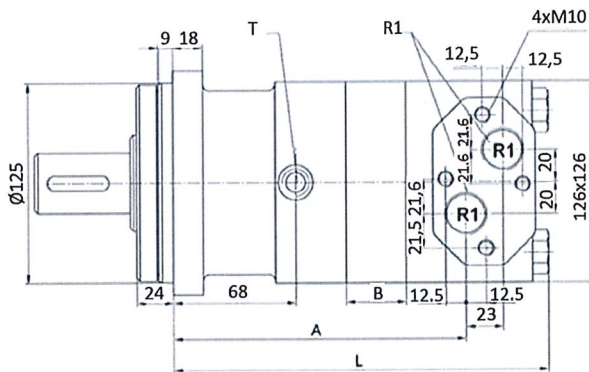
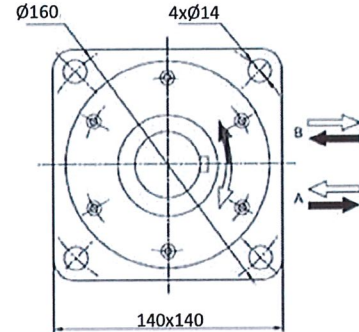
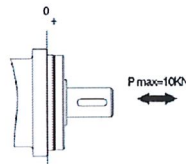
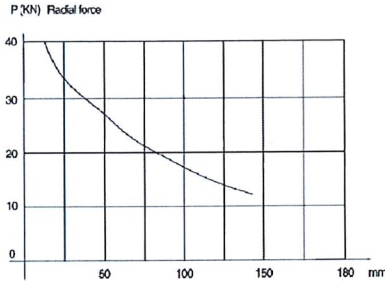
*Peak load rating applies to 0.6 seconds of every minute.

*Peak load rating applies to 0.6 seconds of every minute.

Hydraulic motors

Hydraulic motors

MOMT type motor



Shaft: cylindrical shaft, diameter 40 mm

R1=3/4"

Max. flow interm.: MOMT160 =125 (l/min); Others=150 (l/min)

T: drainage line, thread 1/4"

(Power in kW)

(Torque in daN.m)

Part nº	R1	Max. flow (l/min)	Max. press. cont.	Max. press. interm.	Max. Peak press.	cm ³ / rev	R.P.M. cont.	R.P.M. int.	Max. torque cont.	Max. torque peak	Max. power cont.	A	B	L
MOMT160	3/4" BSP	100	200	240	280	160	615	770	47	67	27	150	12	201
MOMT200	3/4" BSP	125	200	240	280	200	615	750	58	83	34	155	16,5	205,5
MOMT250	3/4" BSP	125	200	240	280	250	495	600	73	102	33,5	160	22	211
MOMT315	3/4" BSP	125	200	240	280	315	375	455	94,8	133	33,4	167	29	218
MOMT400	3/4" BSP	125	180	210	240	400	300	360	107,8	144	30	176	38	227
MOMT500	3/4" BSP	125	160	180	210	500	235	285	122	159,9	26,4	195	56,5	245,5

*** Review attached PDF***

*Intermittent operation rating applies to 6 seconds of every minute.

*Peak load rating applies to 0.6 seconds of every minute.

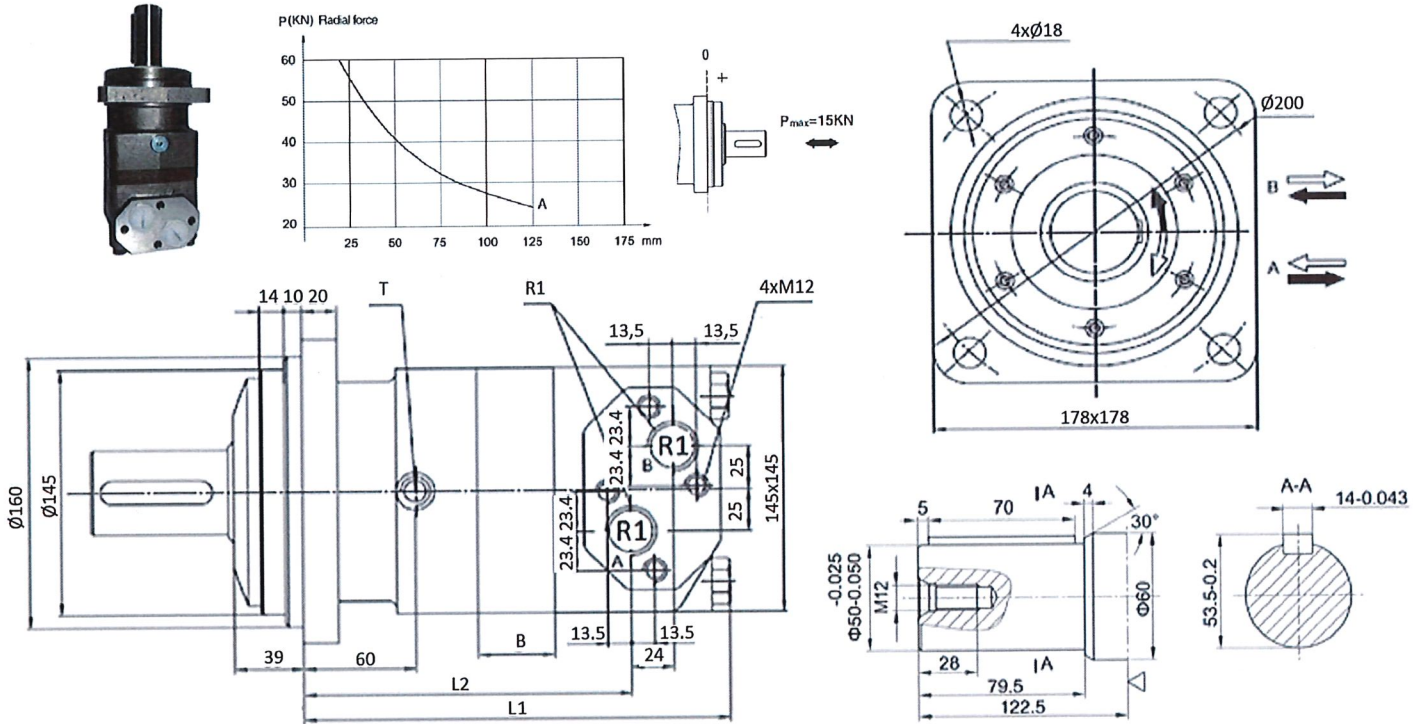
The max backpressure is 5 Bar

Hydraulic motors

Hydraulic motors

MOMV type motor

Page: 1/1



Shaft: cylindrical shaft, diameter 50 mm

T: drainage line, thread 1/4"

(Power in kW)

(Torque in daN.m)

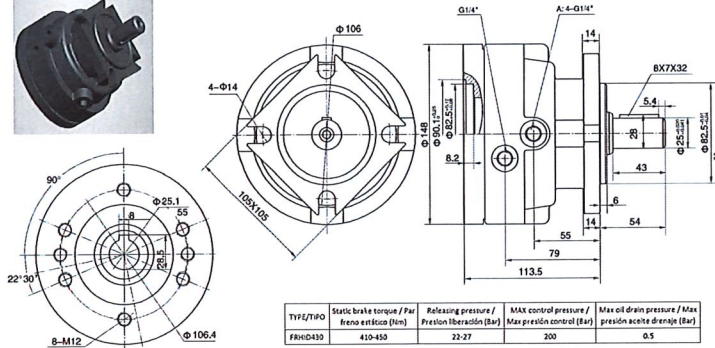
Part n°	R1	Max. flow (l/min)	Max. press. cont.	Max. Peak press.	cm ³ / rev	R.P.M. cont.	Max. torque cont.	Max. power cont.	L1	L2	B
MOMV315	1" BSP	200	200	280	315	630	87,3	32	214	165	19
MOMV400	1" BSP	200	200	280	400	500	110,8	40	221	170	26
MOMV500	1" BSP	200	200	280	500	400	138,5	40	229	177	34
MOMV630	1" BSP	200	180	240	630	315	157	40	239	184	44
MOMV800	1" BSP	200	160	210	800	250	177,3	35	253	195	58

*** Review attached PDF***

Hydraulic motors

Hydraulic motors

Hydraulic brakes for MOMP/MOMR/MOMH motors



The brake is normally activated, and it gets released when pressure exceeds releasing pressure.

The brake needs to be filled with oil before first use (50-100ml, ports A)

Part nº	Max. torque
FRHID430	430 Nm

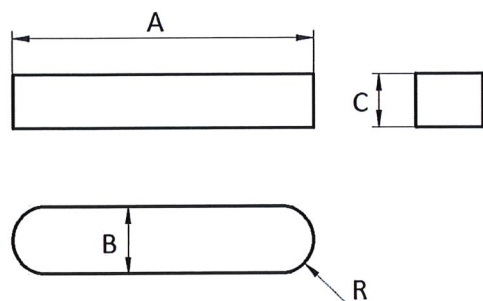
Hydraulic motors

Hydraulic motors

Spare parts for motor

Page: 1/1

CHAVETA / KEY MOTOR



	A	B	C	R
MOMP	32	8	7	4
MOMR	32	8	7	4
MOMS	45	10	8	5
MOMT	70	12	8	6
MOMV	70	14	9	7

JUNTAS / JOINTS



New design (_ND): Motor batch number: from 1403...

New design 2 (_ND_2): Motor batch number: from 1701...

Part nº	Details	Motor
CHAVETAMOMP/MOMR	Chaveta para MOMP/MOMR/Key motor for MOMP/MOMR	MOMP/MOMR
CHAVETAMOMS	Chaveta para MOMS/Key motor for MOMS	MOMS
CHAVETAMOMT	Chaveta para MOMT/Key motor for MOMT	MOMT
CHAVETAMOMV	Chaveta para MOMV/Key motor for MOMV	MOMV
JTOMH	Juntas para MOMH	MOMH
JTOMP	Juntas MOMP (nºlote anterior a 1403)/Seal kits MOMP (nºbatch previous to 1403)	MOMP
JTOMP_ND	Juntas MOMP (nºlote de 1403 a 1701)/Seal kits MOMP (nºbatch from 1403 to 1701)	MOMP
JTOMP_ND_2	Juntas MOMP (nºlote a partir de 1701)/Seal kits MOMP (nºbatch from 1701)	MOMP
JTOMR	Juntas MOMR (nºlote anterior a 1403)/Seal kits MOMR (nºbatch previous to 1403)	MOMR
JTOMR_ND	Juntas MOMR (nºlote de 1403 a 1701)/Seal kits MOMR (nºbatch from 1403 to 1701)	MOMR
JTOMR_ND_2	Juntas MOMR (nºlote a partir de 1701)/Seal kits MOMR (nºbatch from 1701)	MOMR
JTOMS	Juntas MOMS (nºlote anterior a 1403)/Seal kits MOMS (nºbatch previous to 1403)	MOMS
JTOMS_ND	Juntas MOMS (nºlote a partir de 1403)/Seal kits MOMS (nºbatch from 1403)	MOMS
JTOMT	Juntas para MOMT/Seal kits for MOMT	MOMT
JTOMV	Juntas para MOMV/Seal kits for MOMV	MOMV

*** Review attached PDF***